

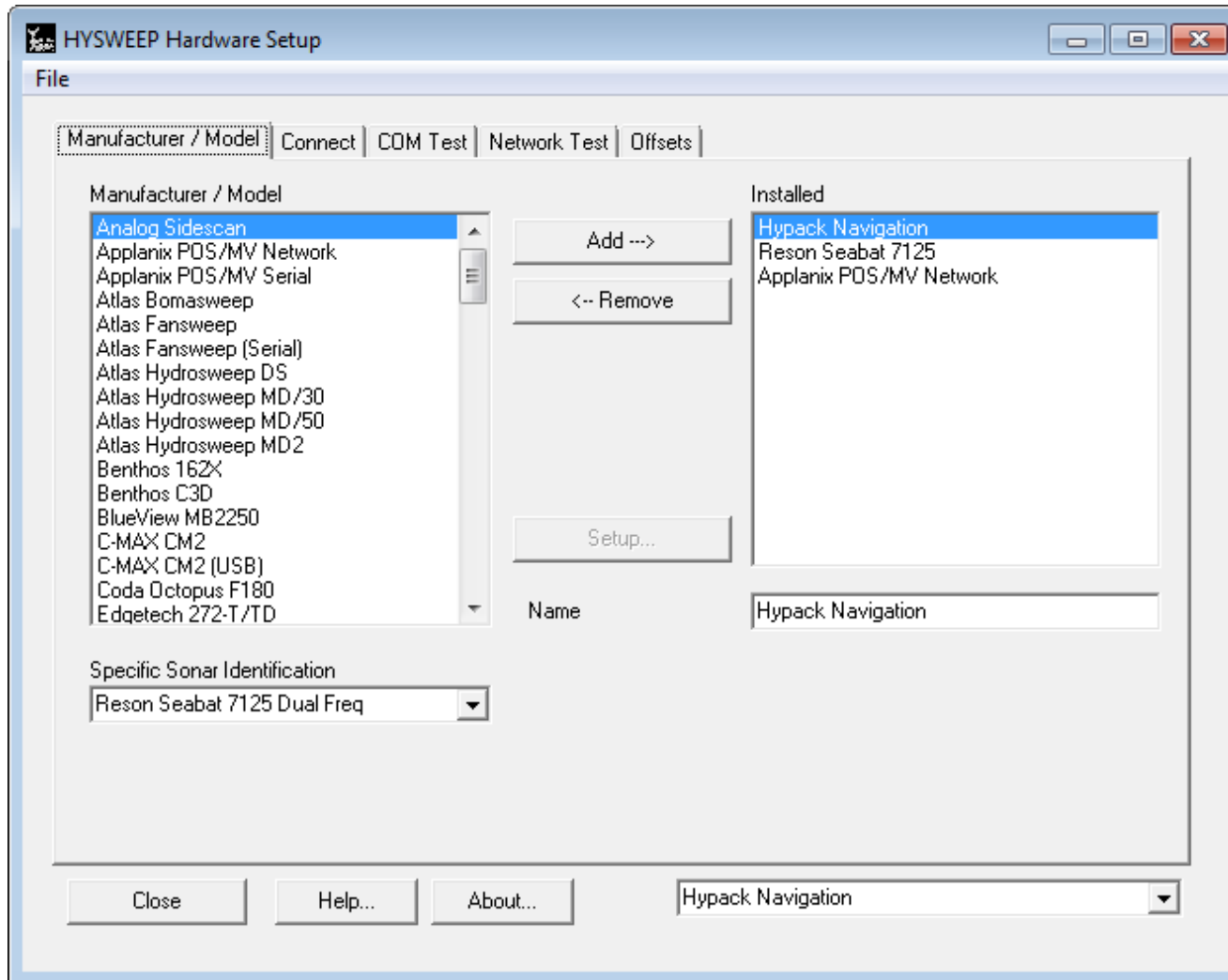
R/V Hugh R. Sharp Hypack Configuration Documentation

Multibeam Advisory Committee

May 7, 2013

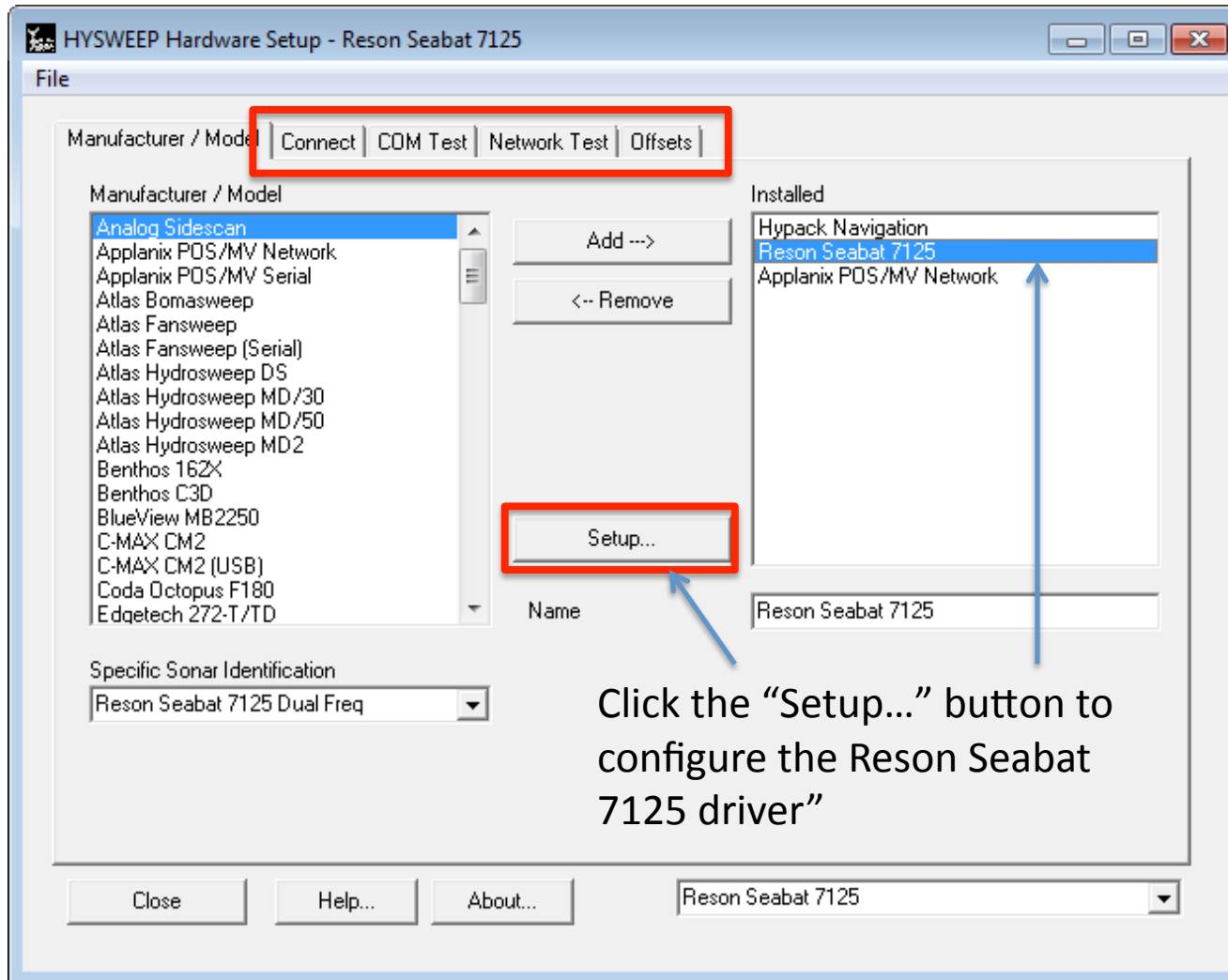
Hypack 2012

Hardware Configuration Parameters



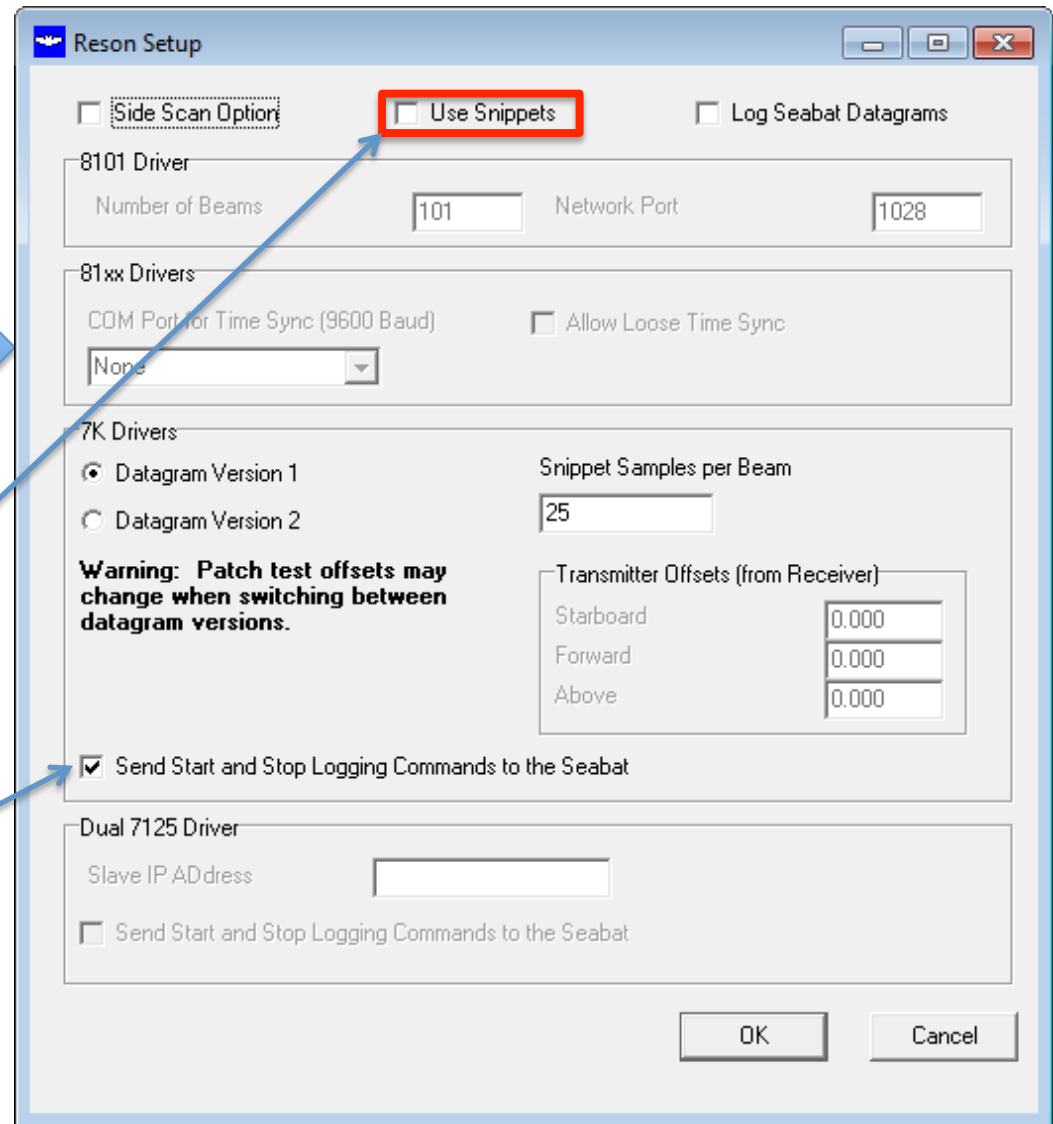
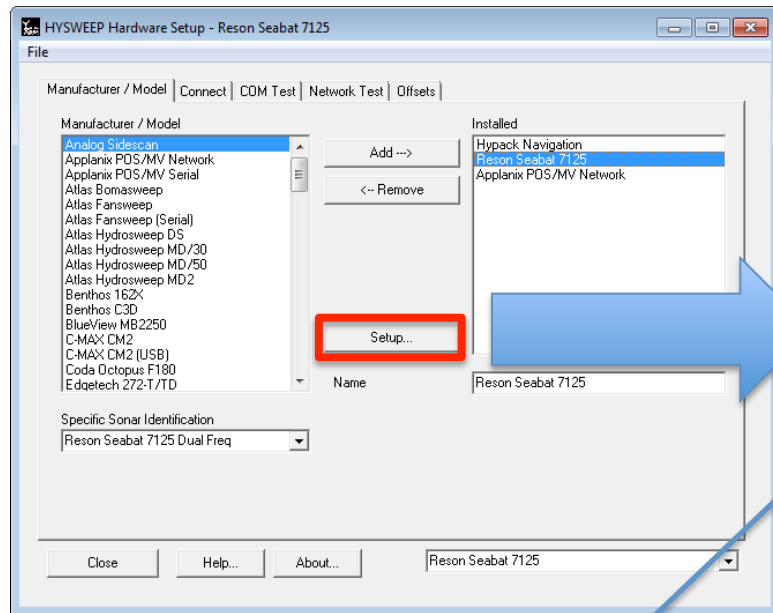
Access under “HYSWEEP” menu, choose “HYSWEEP Hardware”

Hardware Configuration Parameters



Access under "HYSWEEP" menu, choose "HYSWEEP Hardware"

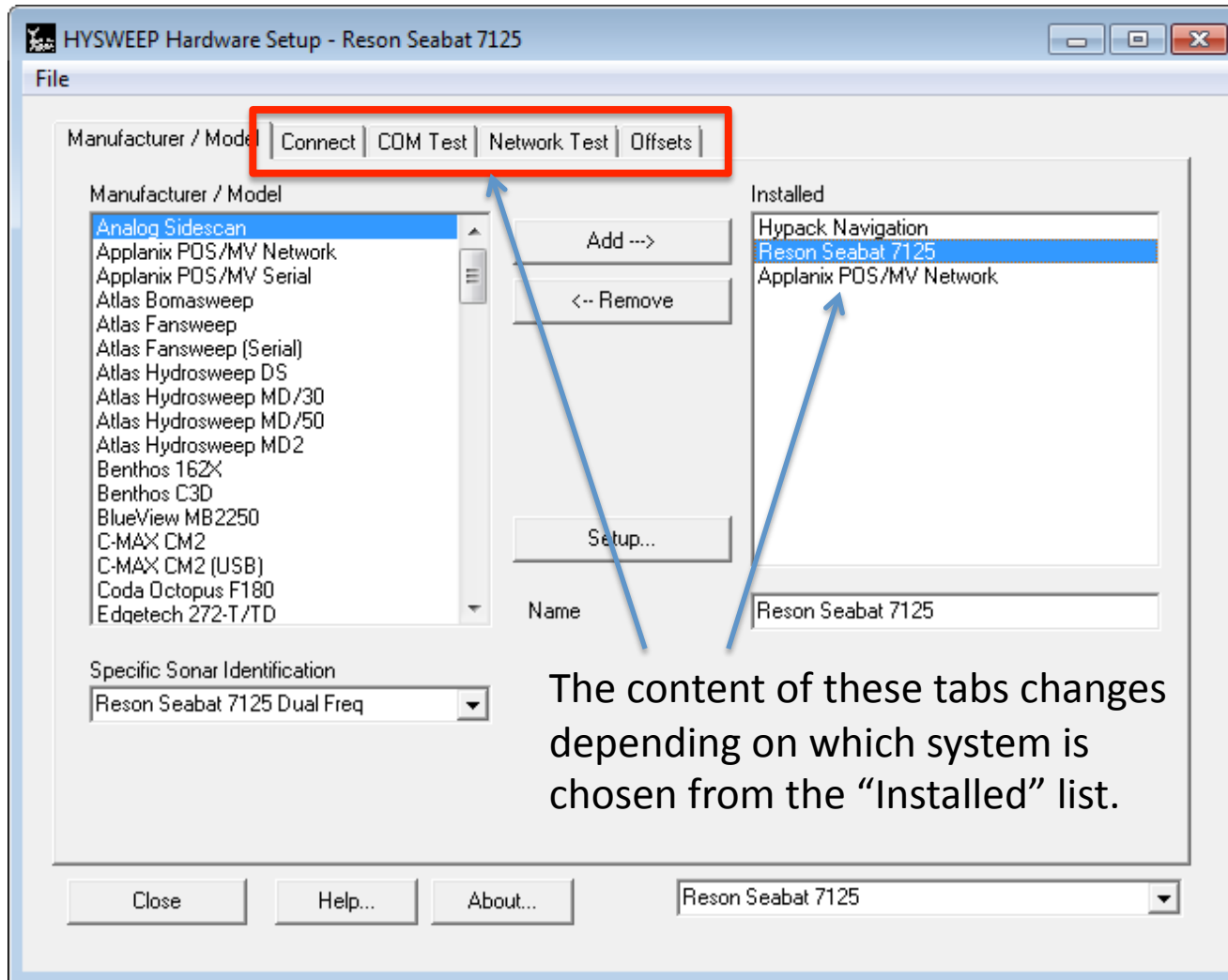
Hardware Configuration Parameters



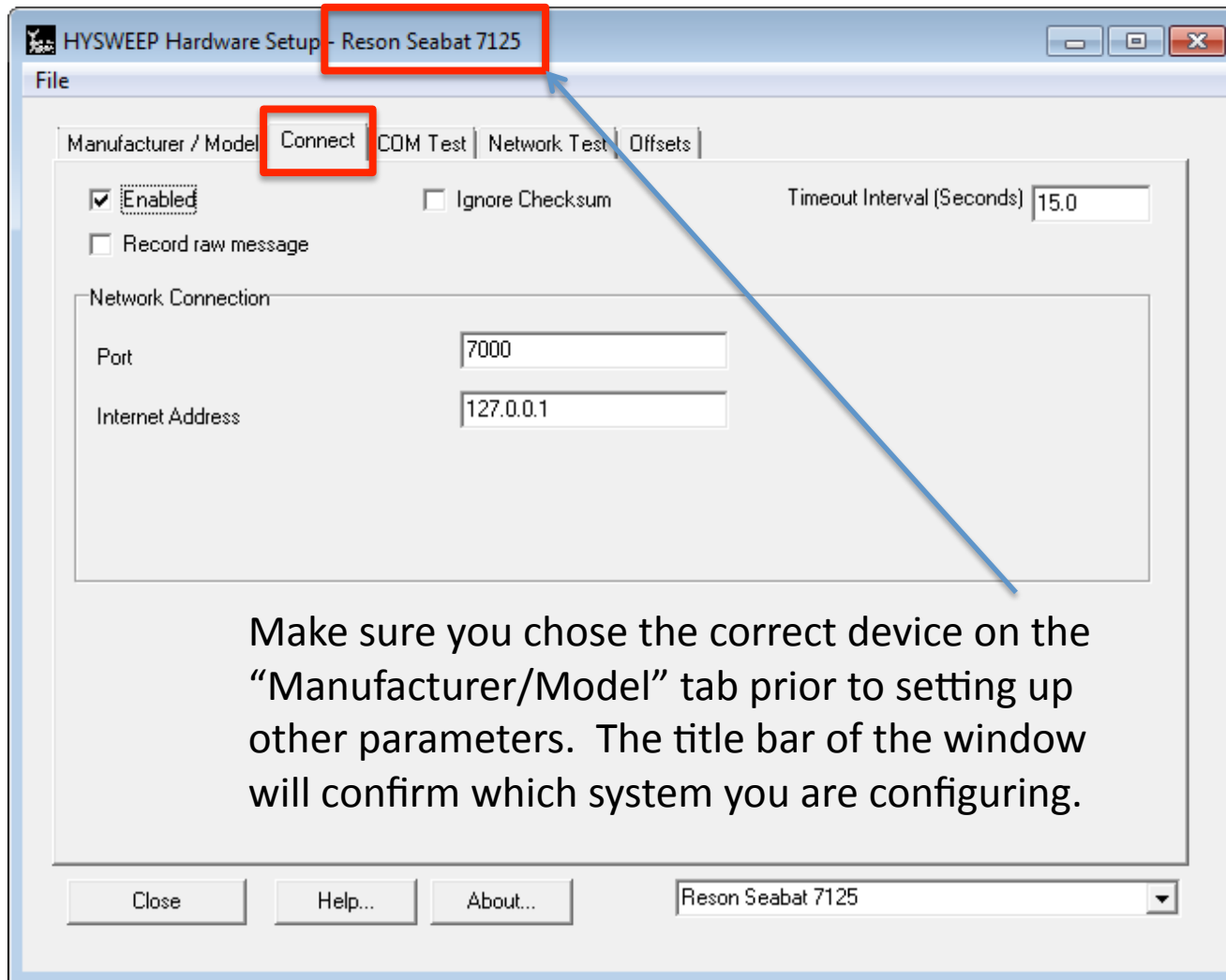
Logging snippets in Hypack made Hypack very unstable during the installation trials.

This allows you to control start/stop logging in Reson 7kCenter to facilitate recording of snippets/sidescan data.

Access under “HYSWEEP” menu, choose “HYSWEEP Hardware”



Hardware Configuration Parameters

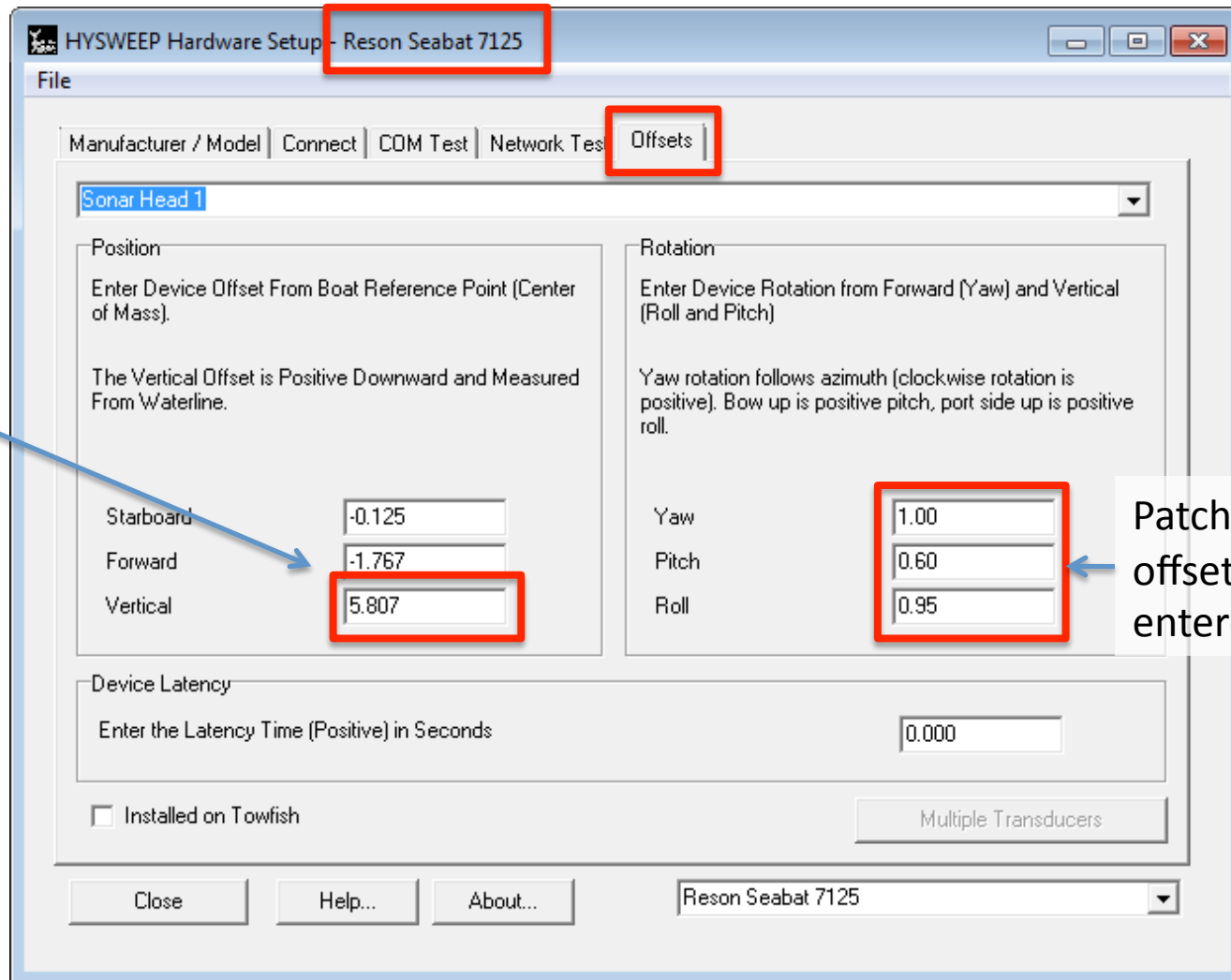


Access under “HYSWEEP” menu, choose “HYSWEEP Hardware”

Hardware Configuration Parameters

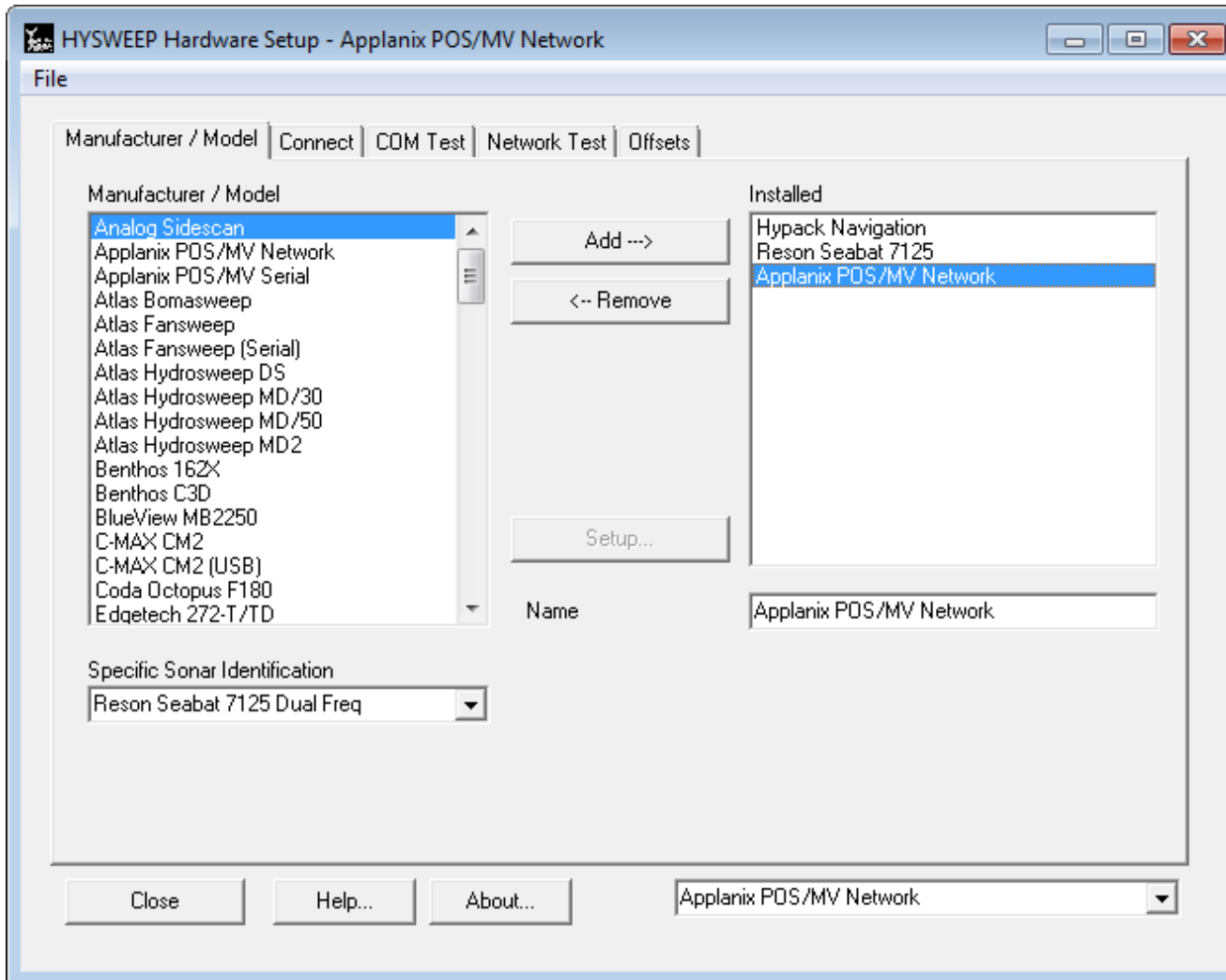
This value varies with the drop keel deployment configuration:
6' → 4.943 m
3' → 4.028 m
0' → 3.114 m
-1' → 2.809 m

The values reported for this in the previous document (2012-11-10) were incorrect.



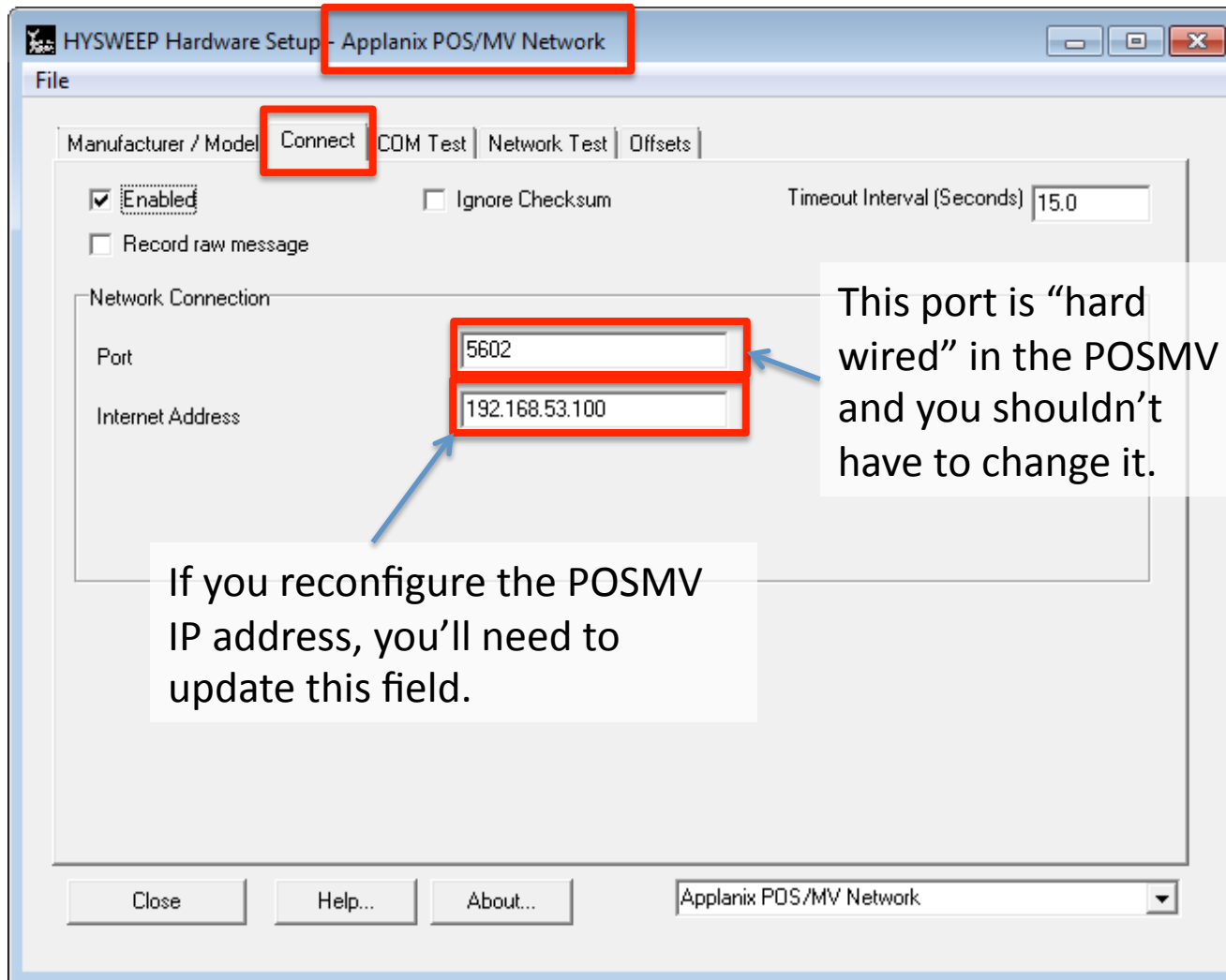
Access under “HYSWEEP” menu, choose “HYSWEEP Hardware”

Hardware Configuration Parameters



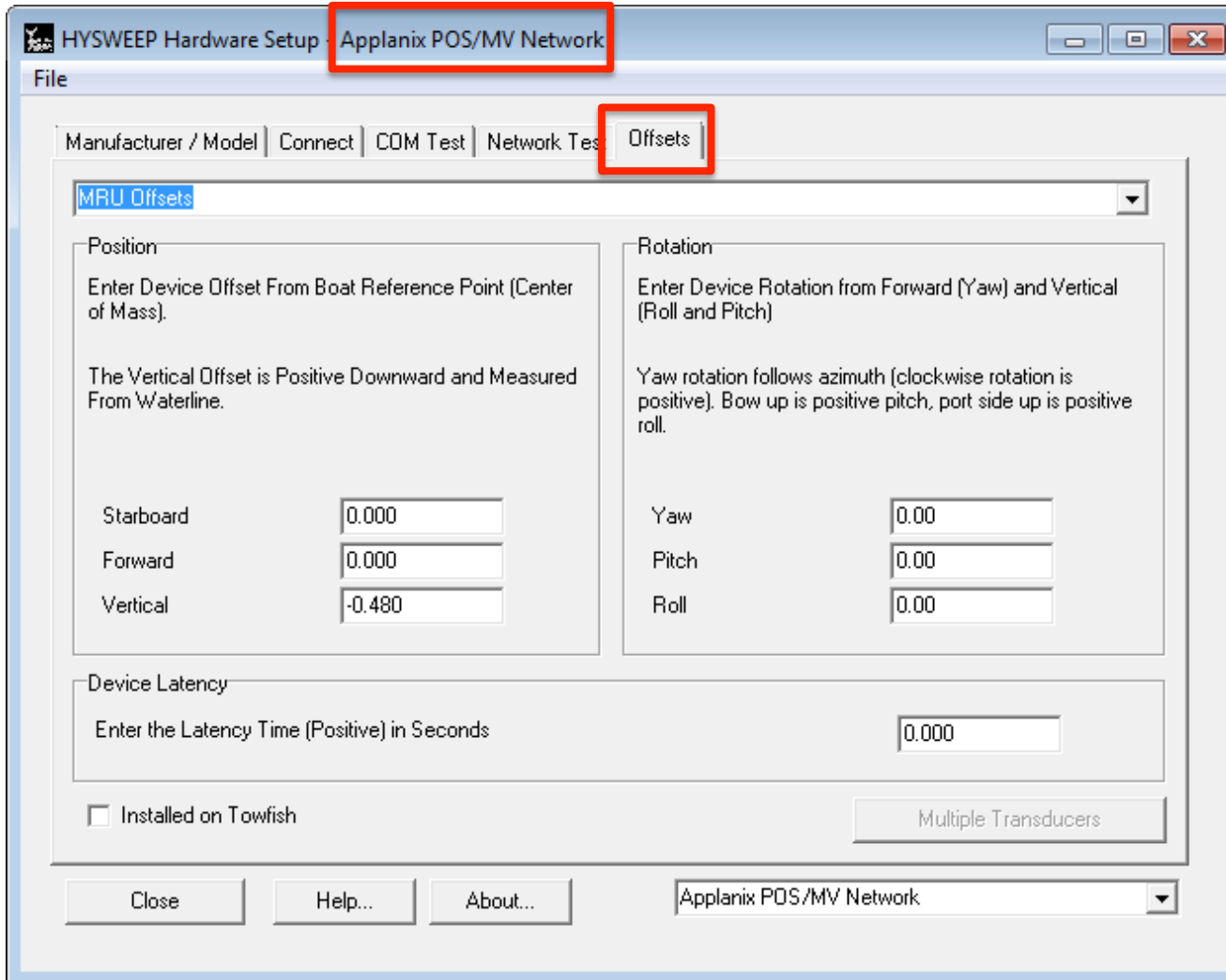
Access under “HYSWEEP” menu, choose “HYSWEEP Hardware”

Hardware Configuration Parameters



Access under “HYSWEEP” menu, choose “HYSWEEP Hardware”

Hardware Configuration Parameters



Access under “HYSWEEP” menu, choose “HYSWEEP Hardware”

Questions? Feedback? Suggestions?

- Please email us:
 - mac-help@unols.org