

R/V Hugh R. Sharp
Reson 7125 Configuration
Documentation

Multibeam Advisory Committee
November 10, 2012

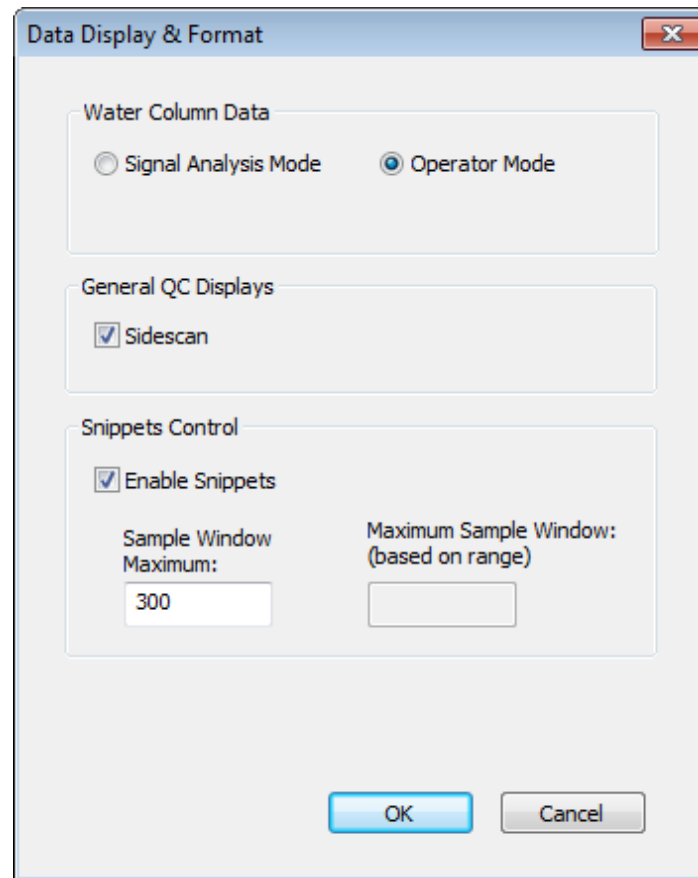
Reson 7125, SV3/FP3

Software Version



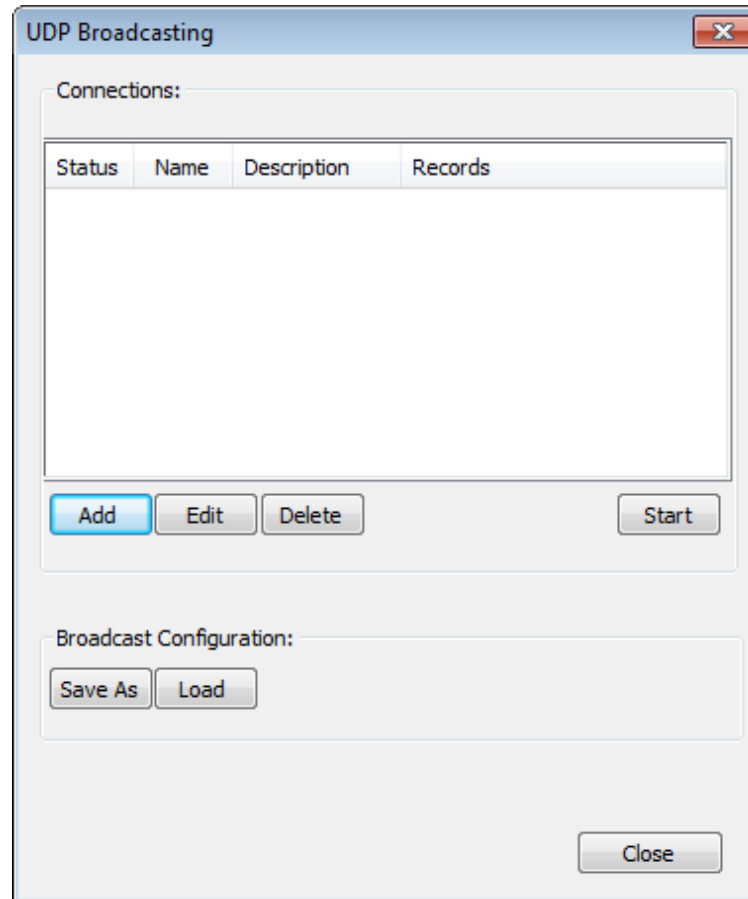
Access under “Help” menu, choose “About Seabat...”

Configuration



Access under “Configuration” menu, choose “Data Display & Format...”

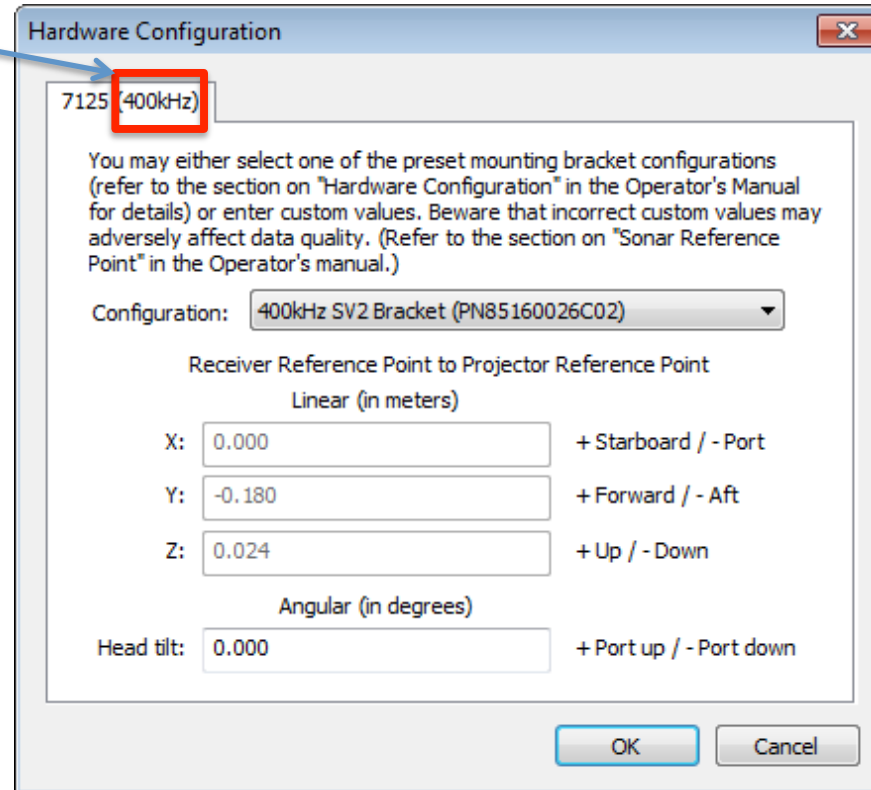
Configuration



Access under “Configuration” menu, choose “UDP Broadcasting...”

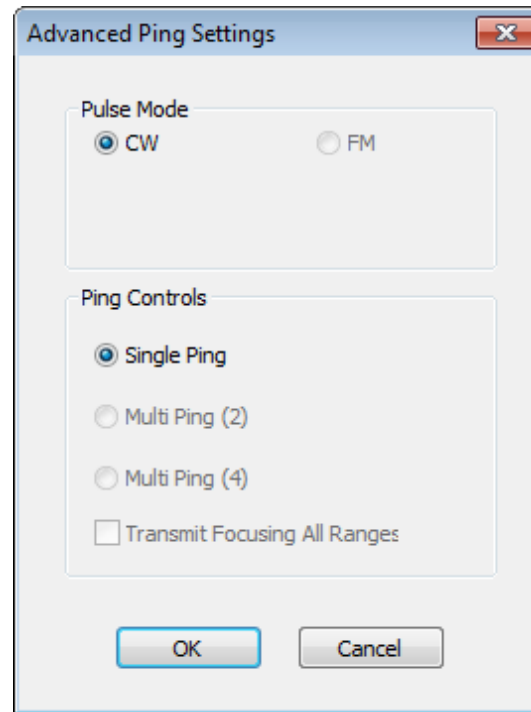
Configuration

Note that these offsets vary with frequency. When running in dual swath mode, you'll see one tab for each frequency (200 kHz and 400 kHz).



Access under “Configuration” menu, choose “Hardware...”

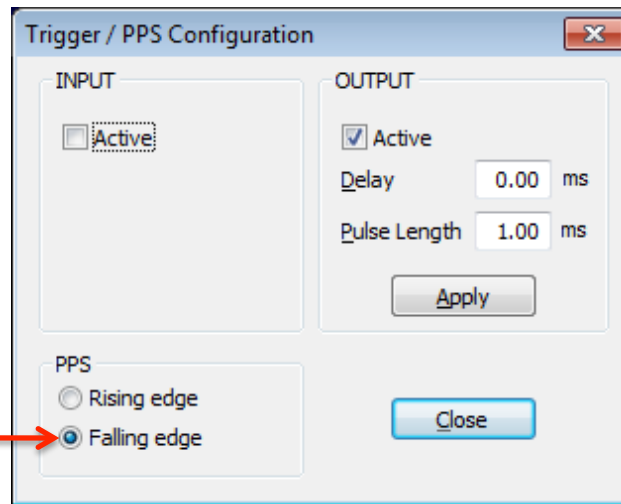
Configuration



Access under “Configuration” menu, choose “Advanced Ping Settings...”

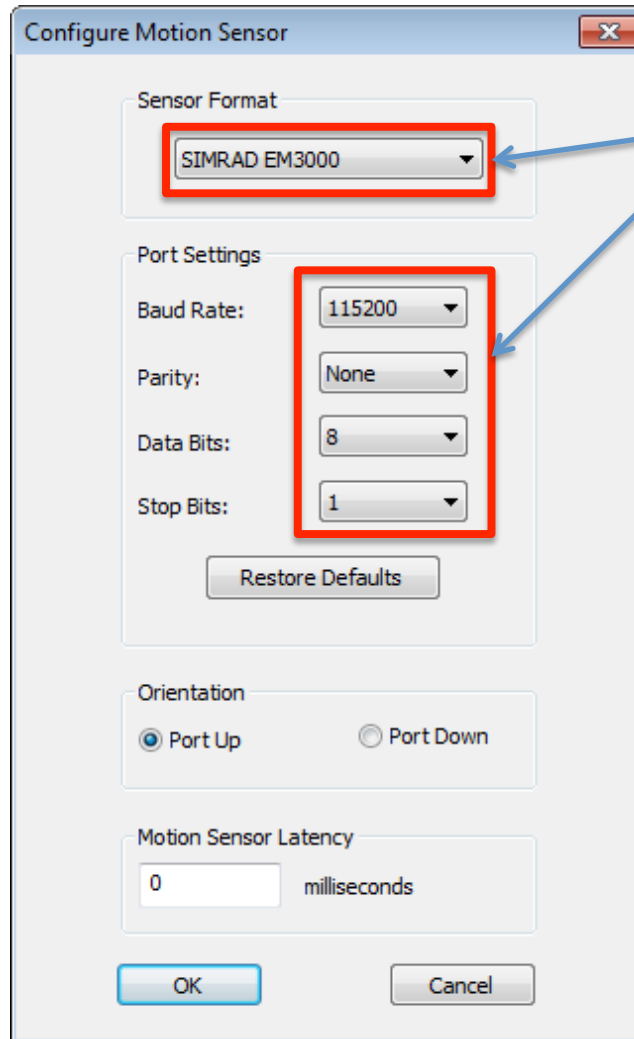
Configuration

WARNING: This setting must match the PPS output configuration for the POSMV (which is itself user-configurable)



Access under “Configuration” menu, choose “Triggering...”

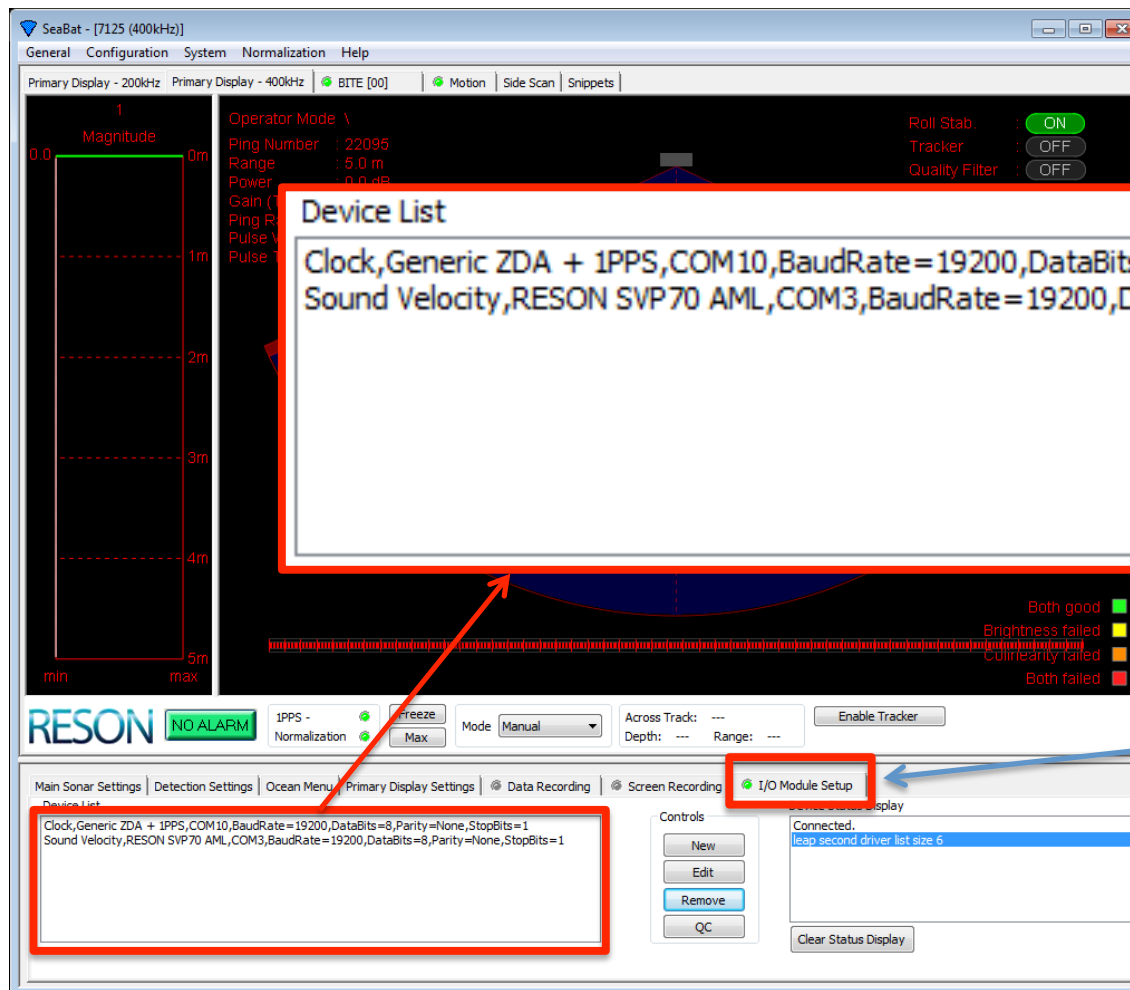
Configuration



These need to match what the POSMV is outputting on COM4.

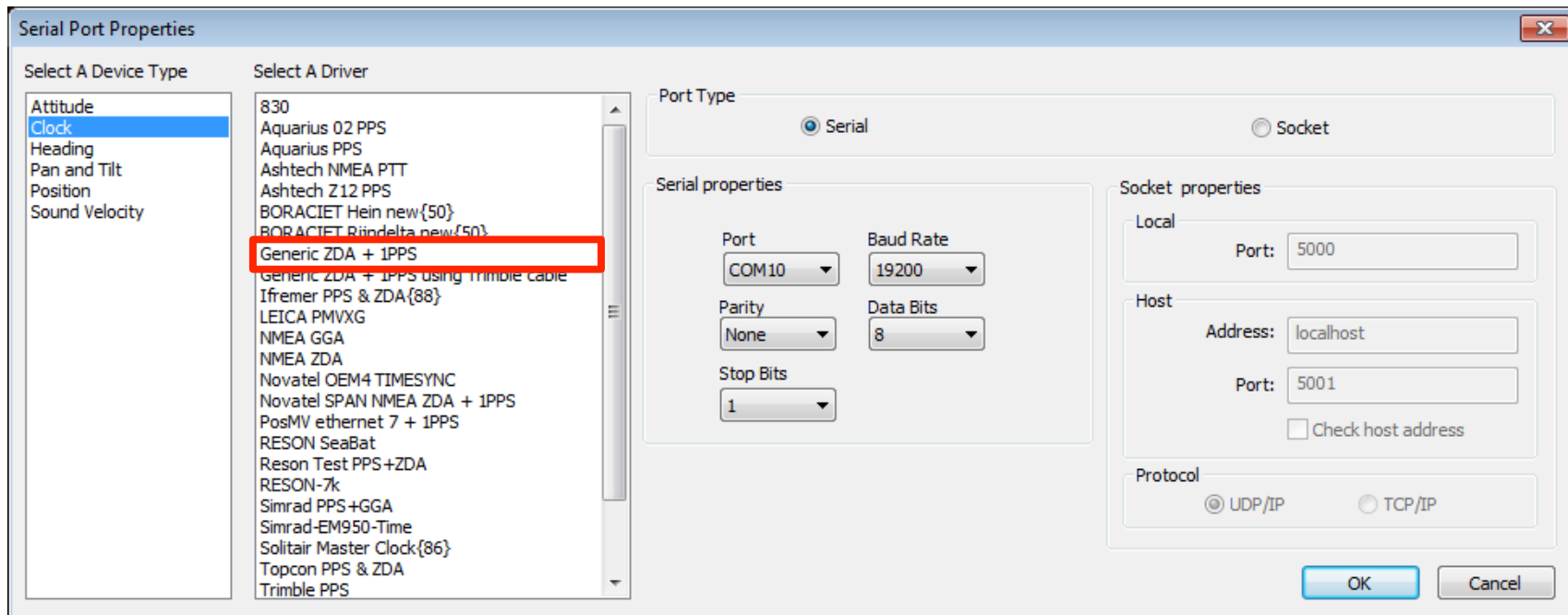
Access under “Configuration” menu, choose “Motion...”

Configuration



I/O Module Setup tab

Configuration



Configuration

Serial Port Properties

Select A Device Type

- Attitude
- Clock
- Heading
- Pan and Tilt
- Position
- Sound Velocity

Select A Driver

- Ifemer Pourquoi Pas{88}
- Manual-Input
- MicroCAT SBE37
- RESON SVP70 AML
- RESON SVP-C
- RESON-7k
- RESON-7k-QC
- SBE45 Thermosalinograph
- SBE45 Thermosalinograph format X
- SeaKing SCU Bathy
- Smart Probe
- Smart Probe with depth sensor
- Soundvelocity Sim
- Valeport midas SVX2
- Valeport miniSVS
- Valeport miniSVS mm
- Valeport miniSVS with pressure sensor
- Valeport miniSVS-SM4{331}

Port Type

Serial Socket

Serial properties

Port: COM3 Baud Rate: 19200

Parity: None Data Bits: 8

Stop Bits: 1

Socket properties

Local Port: 5000

Host Address: localhost Port: 5001

Check host address

Protocol

UDP/IP TCP/IP

OK Cancel

Questions? Feedback? Suggestions?

- Please email us:
 - mac-help@unols.org