

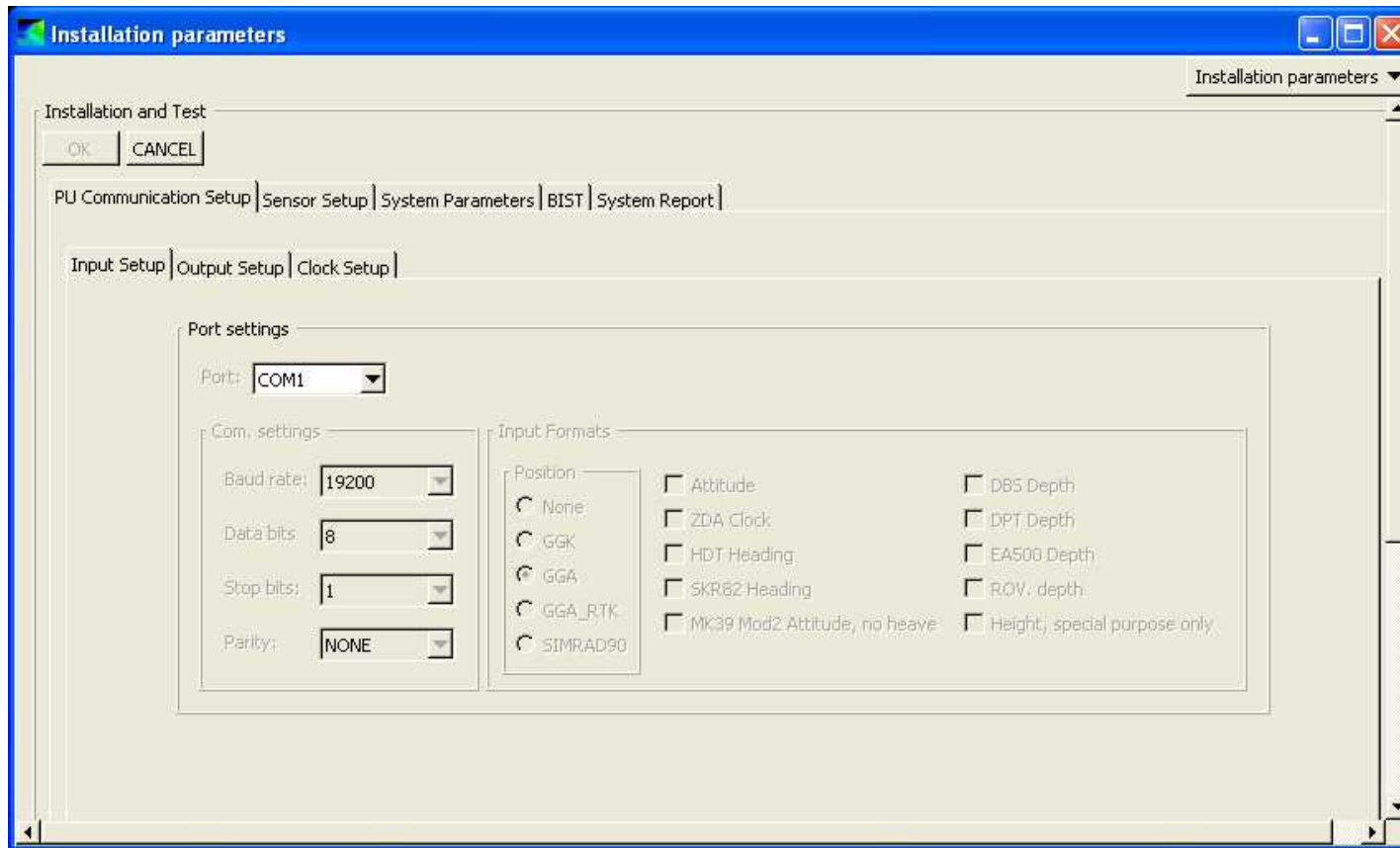
R/V Roger Revelle EM122 System Configuration Documentation

Multibeam Advisory Committee
January 21, 2013
SIS 3.9.0

Contents

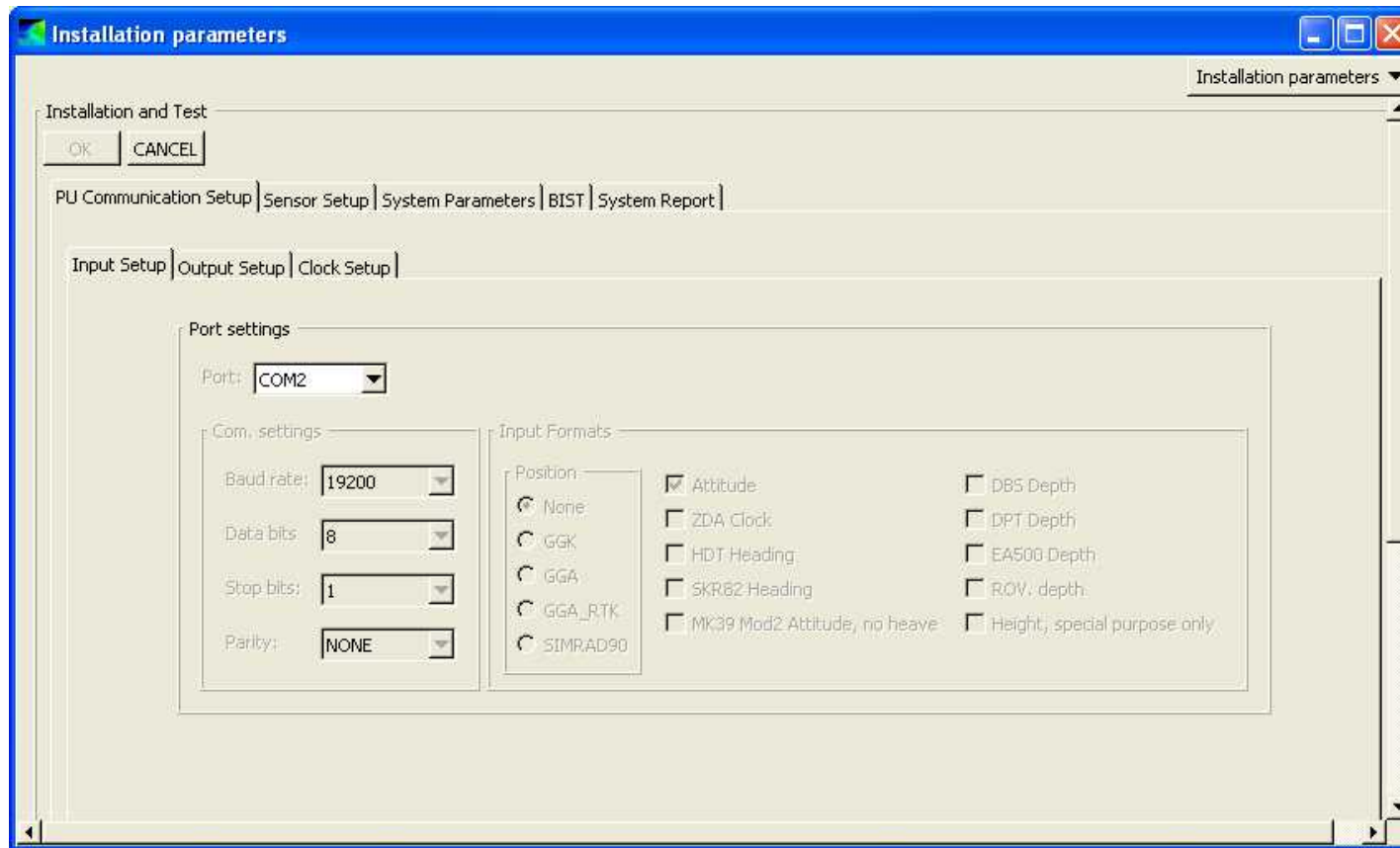
- Installation Parameters
- Runtime Parameters
- External Sensors
- Datagram Distribution
- DataDistrib.exe

Installation Parameters



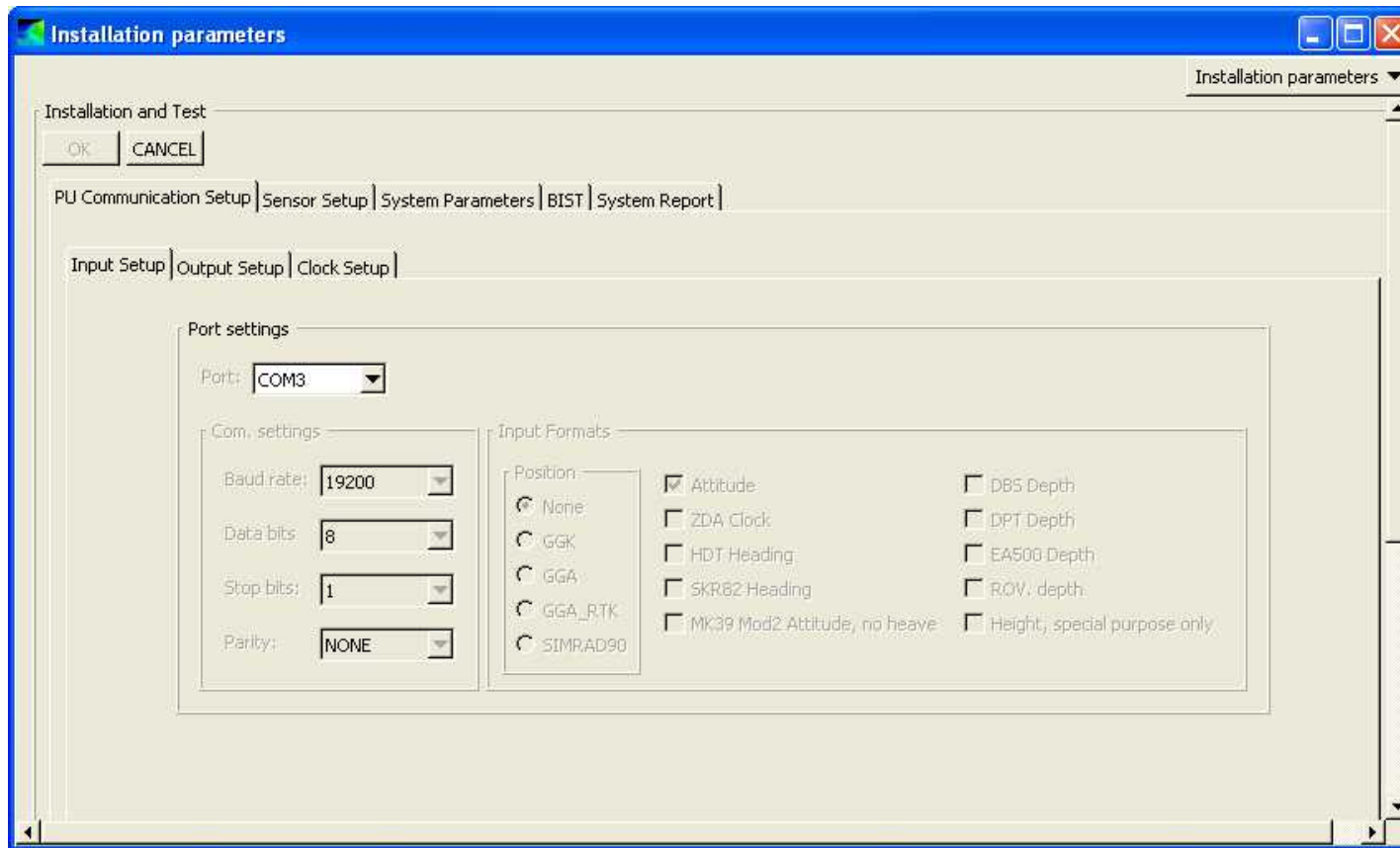
Access via “View” menu, choose “Tear Off” and choose “Installation parameters”

Installation Parameters



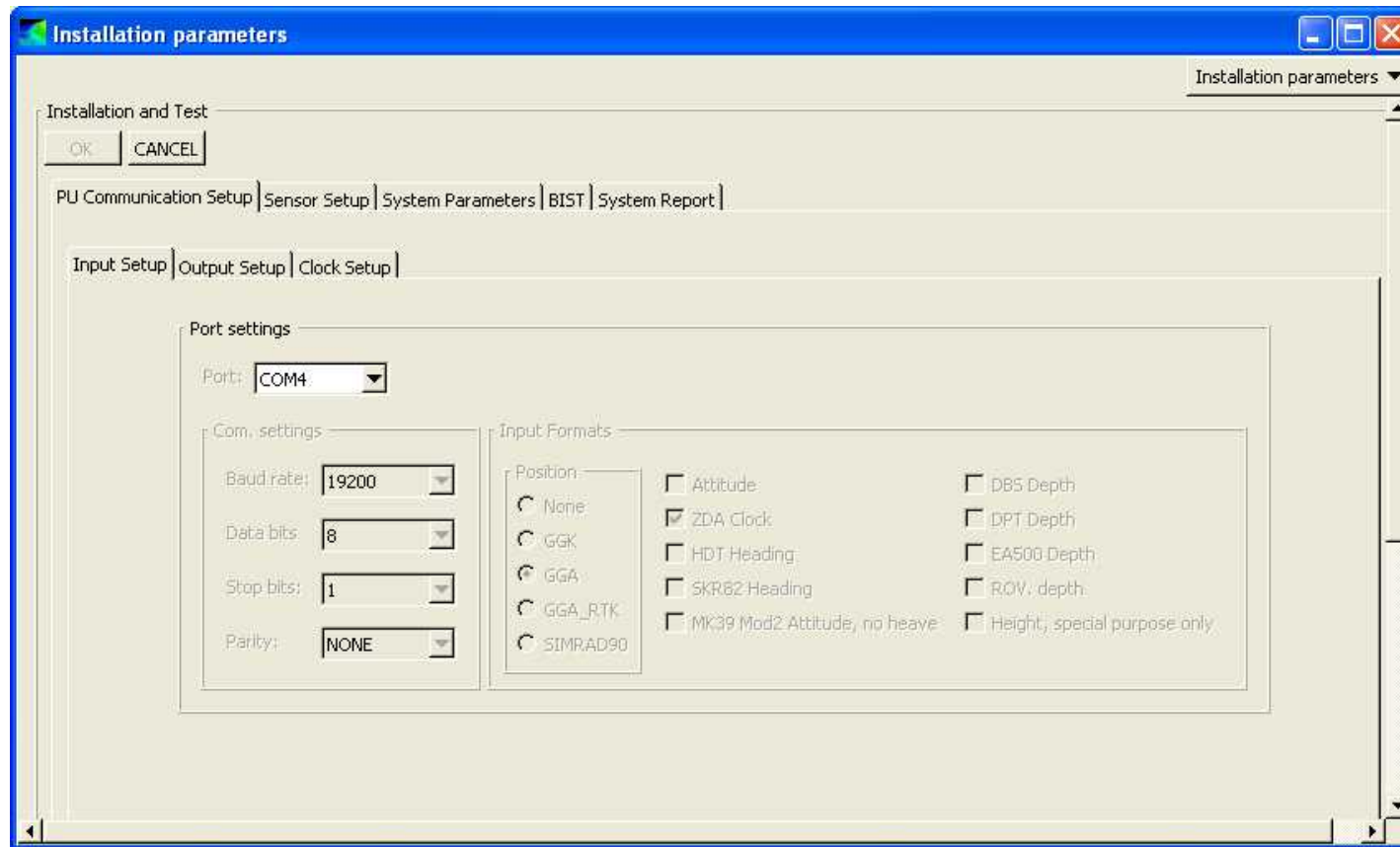
Access via “View” menu, choose “Tear Off” and choose “Installation parameters”

Installation Parameters



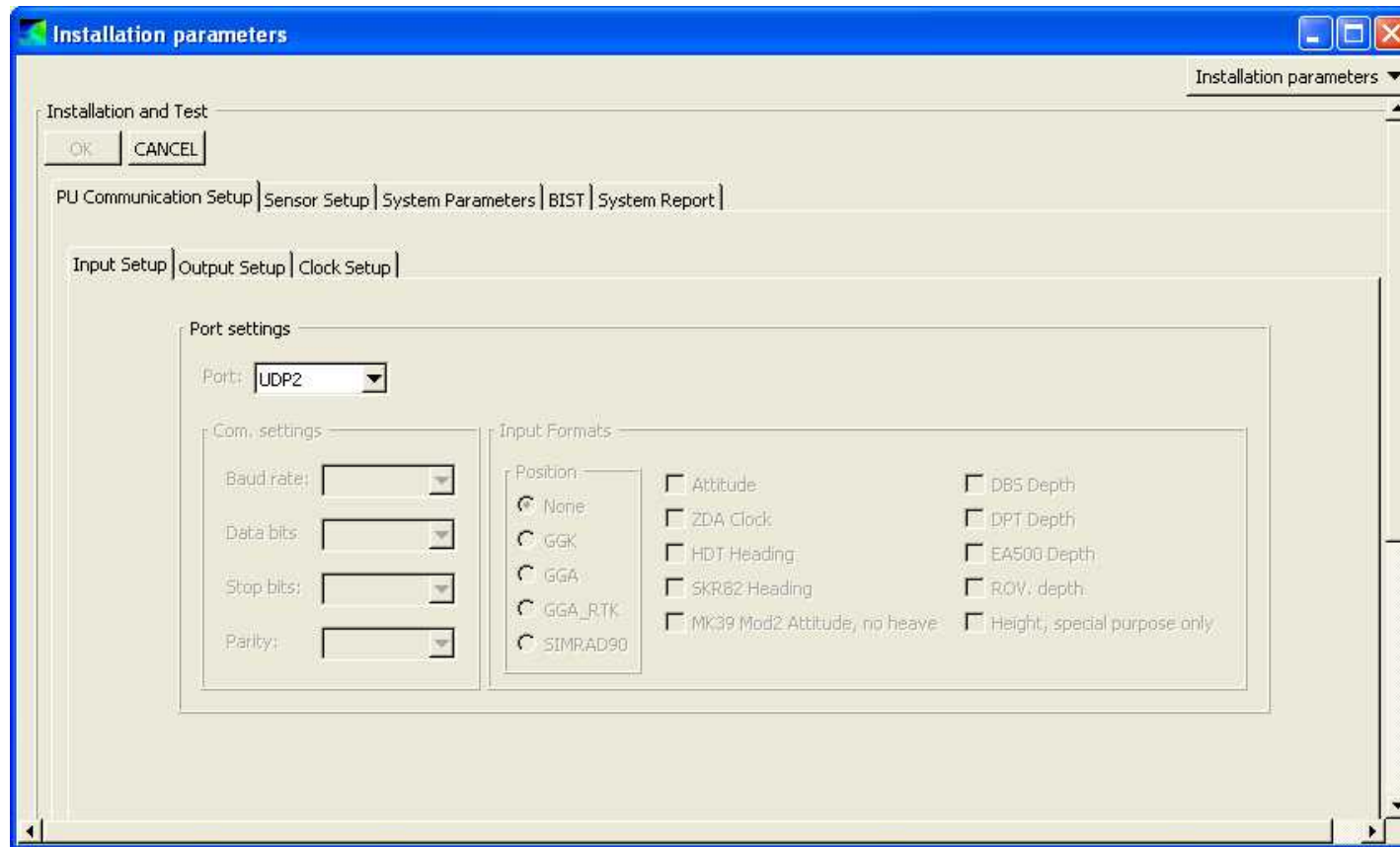
Access via “View” menu, choose “Tear Off” and choose “Installation parameters”

Installation Parameters



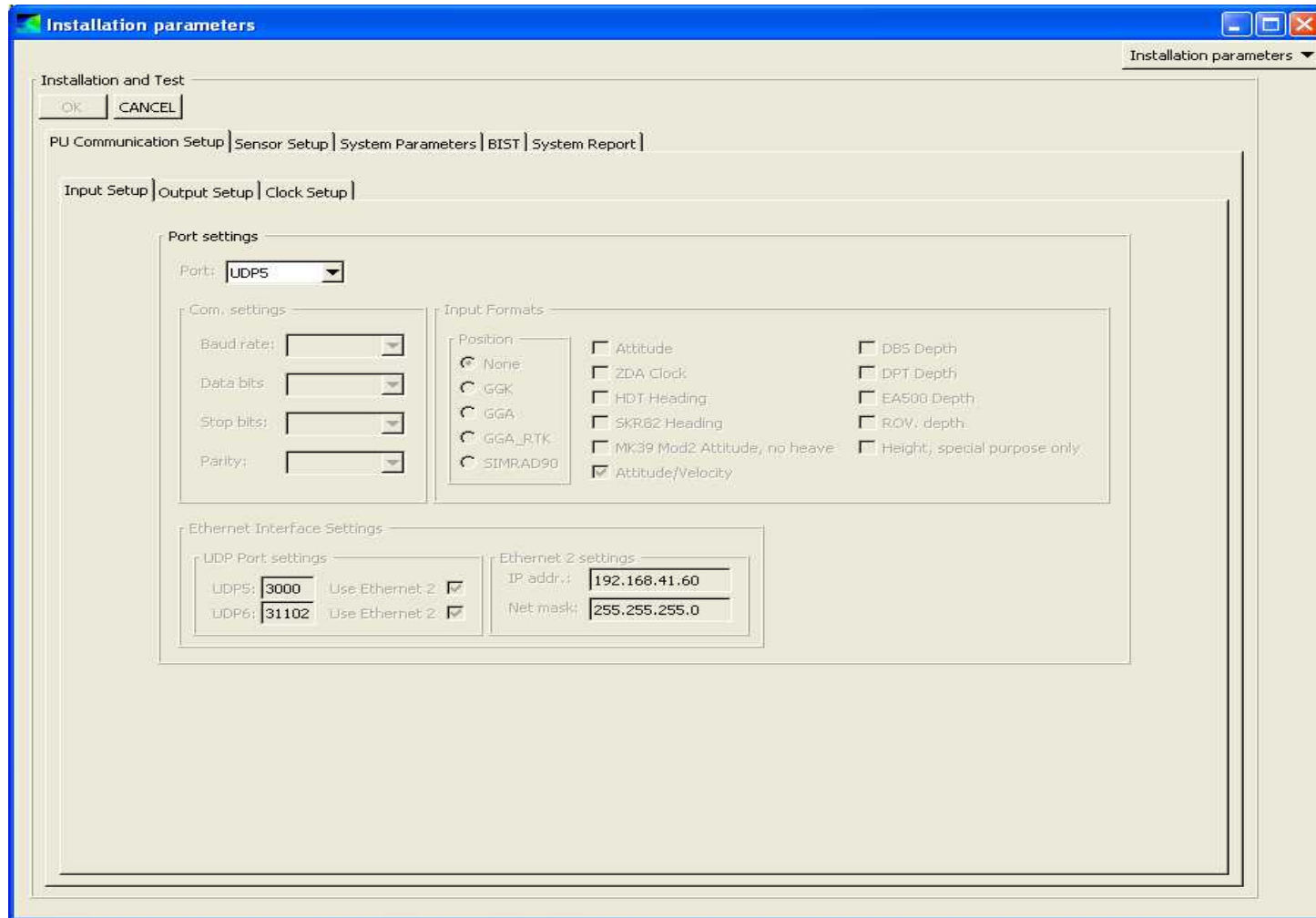
Access via “View” menu, choose “Tear Off” and choose “Installation parameters”

Installation Parameters



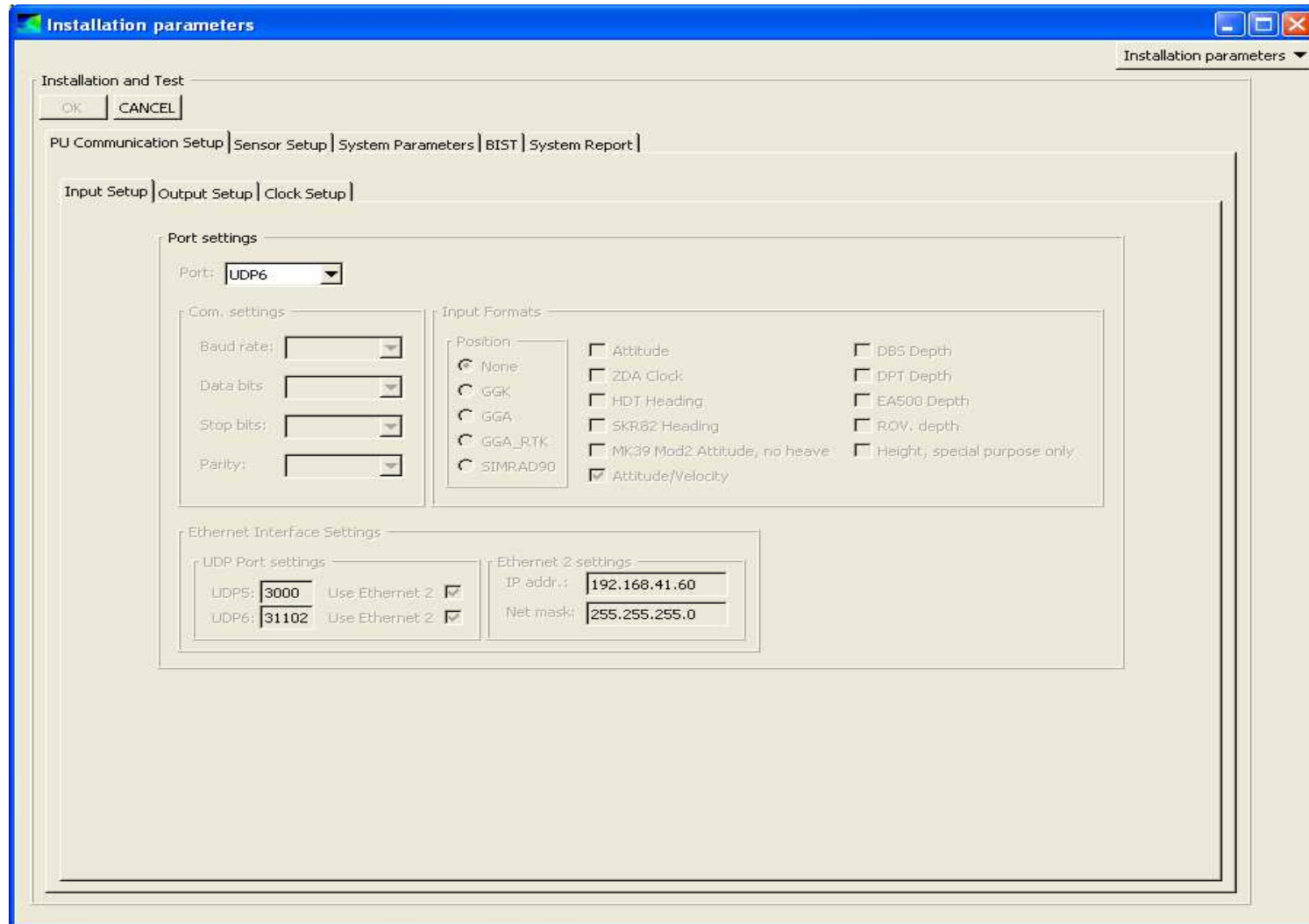
Access via “View” menu, choose “Tear Off” and choose “Installation parameters”

Installation Parameters



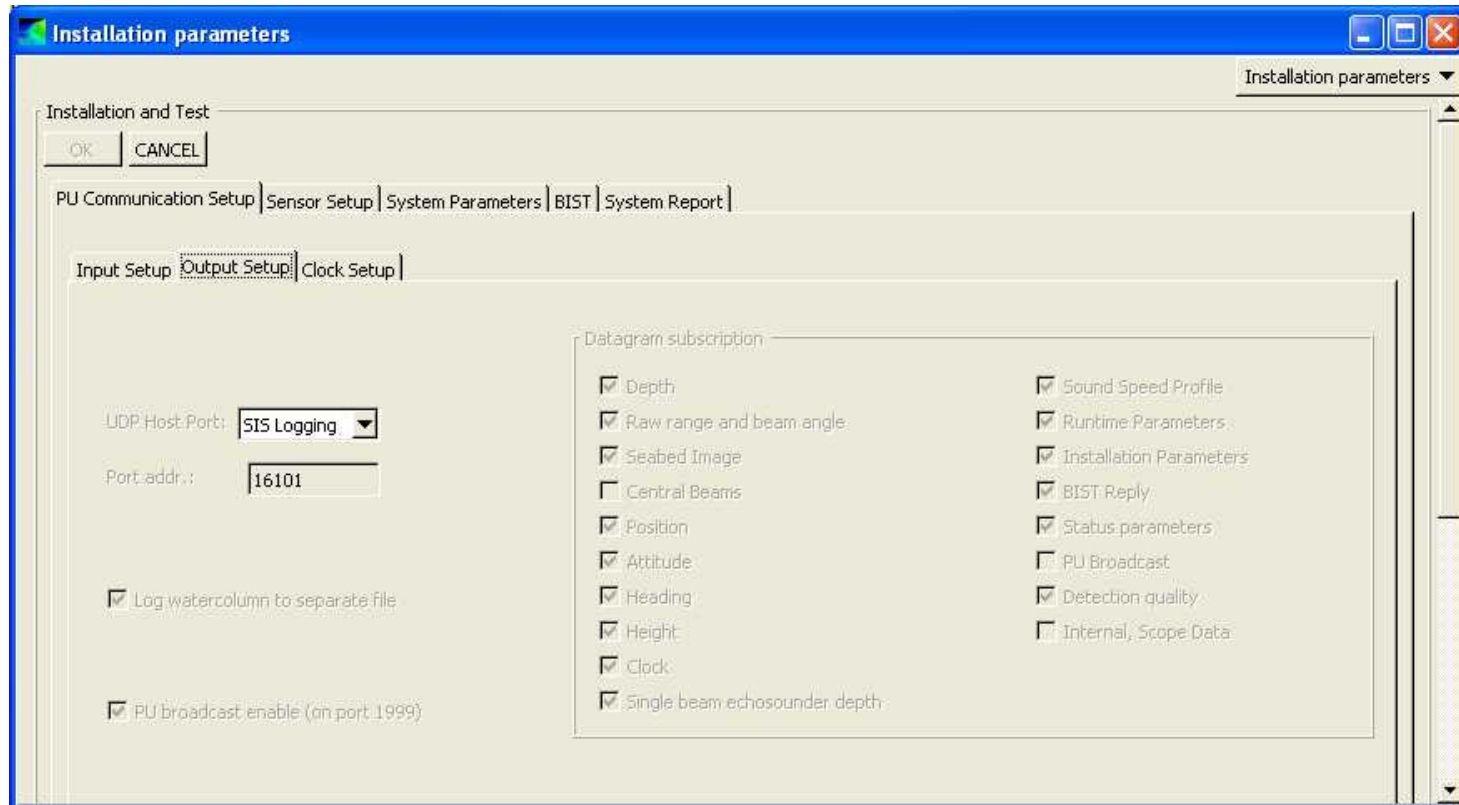
Access via “View” menu, choose “Tear Off” and choose “Installation parameters”

Installation Parameters



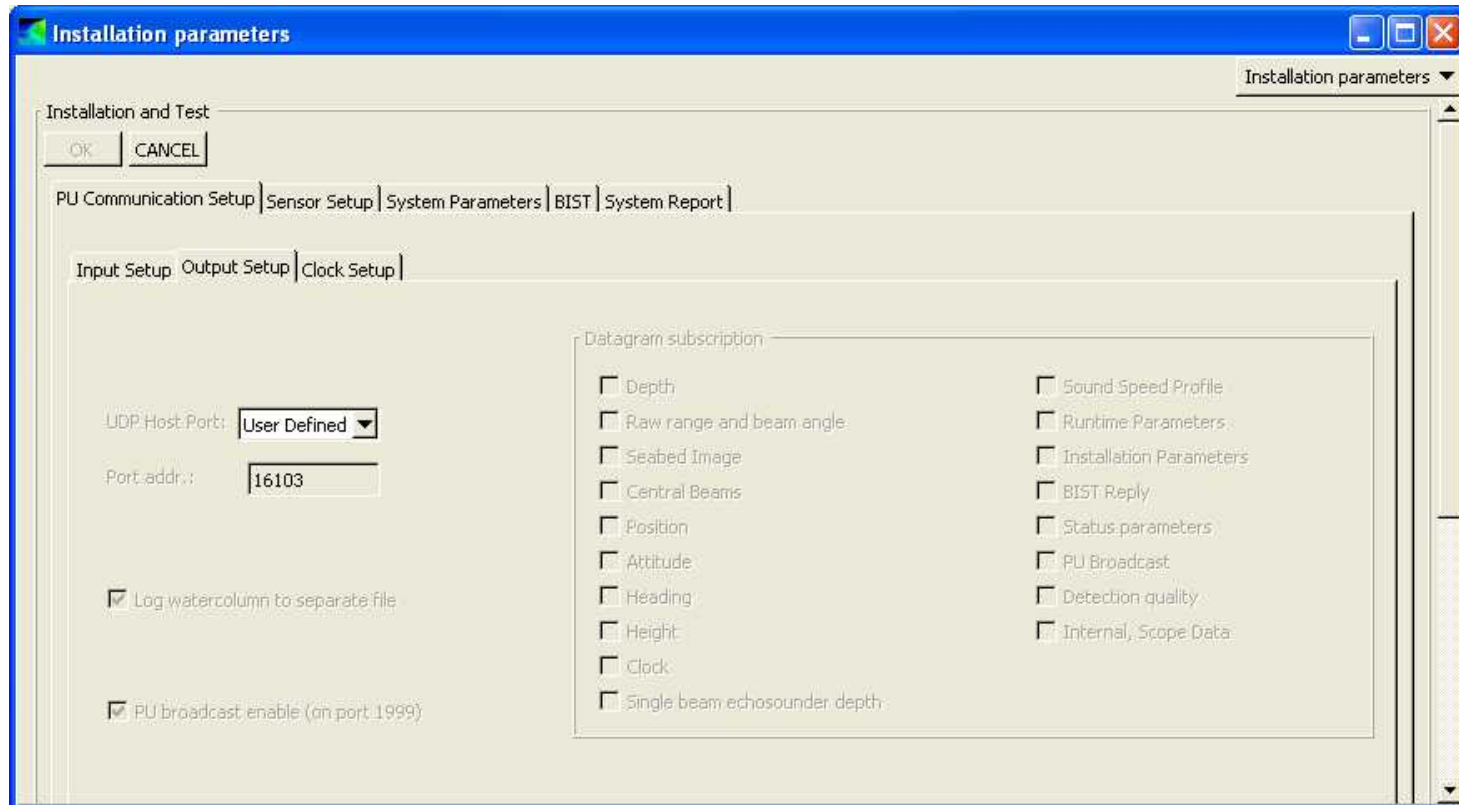
Access via “View” menu, choose “Tear Off” and choose “Installation parameters”

Installation Parameters



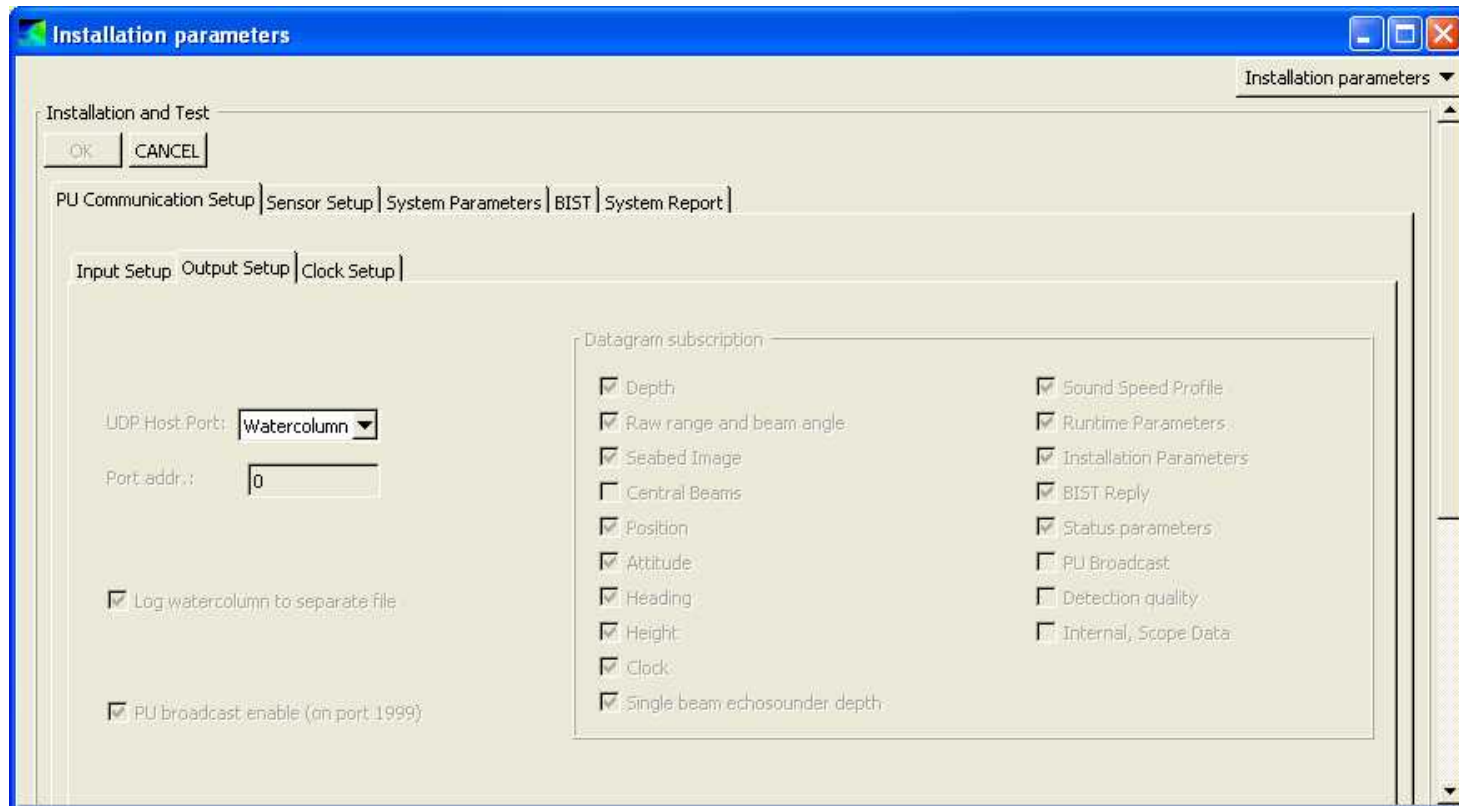
Access via “View” menu, choose “Tear Off” and choose “Installation parameters”

Installation Parameters



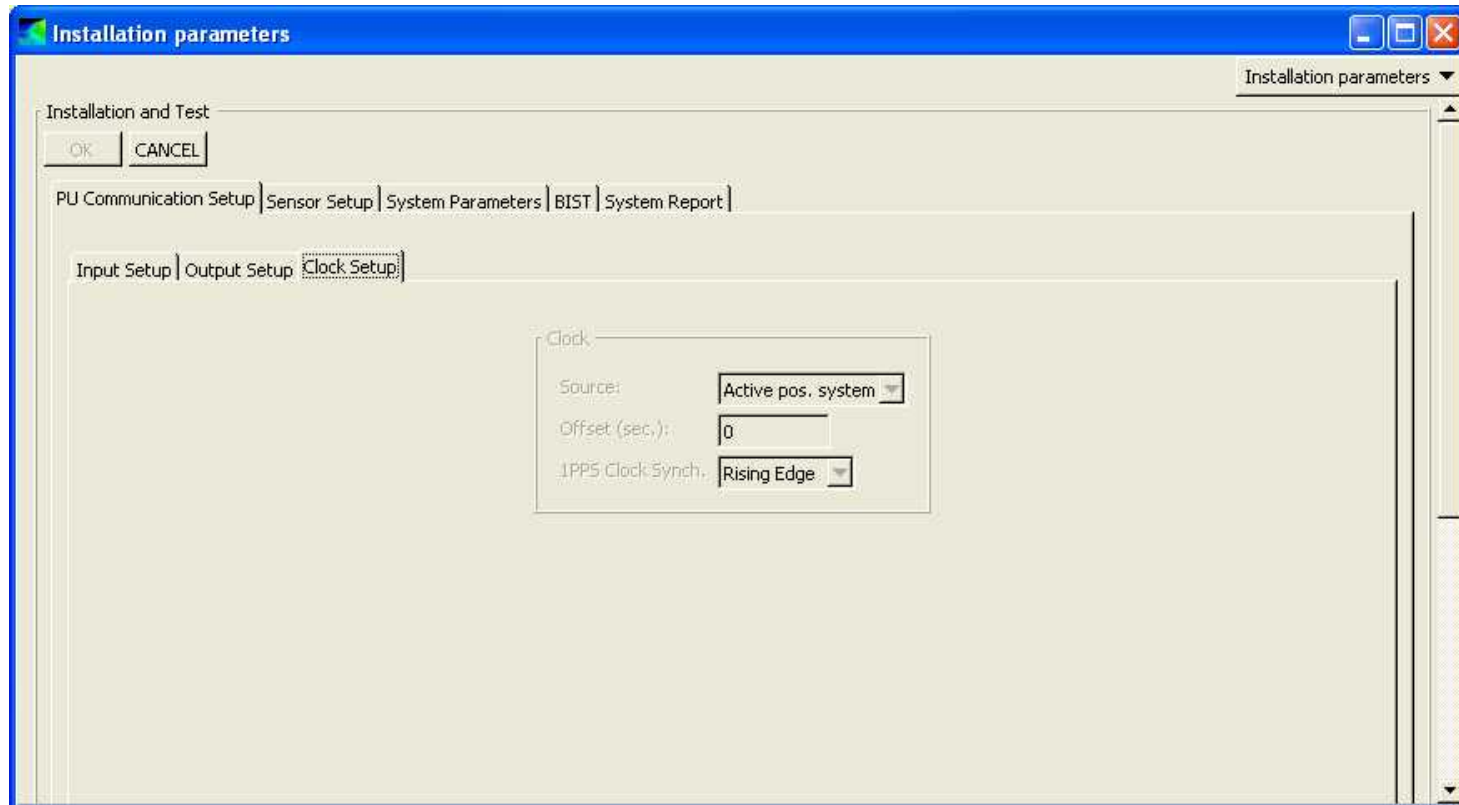
Access via “View” menu, choose “Tear Off” and choose “Installation parameters”

Installation Parameters



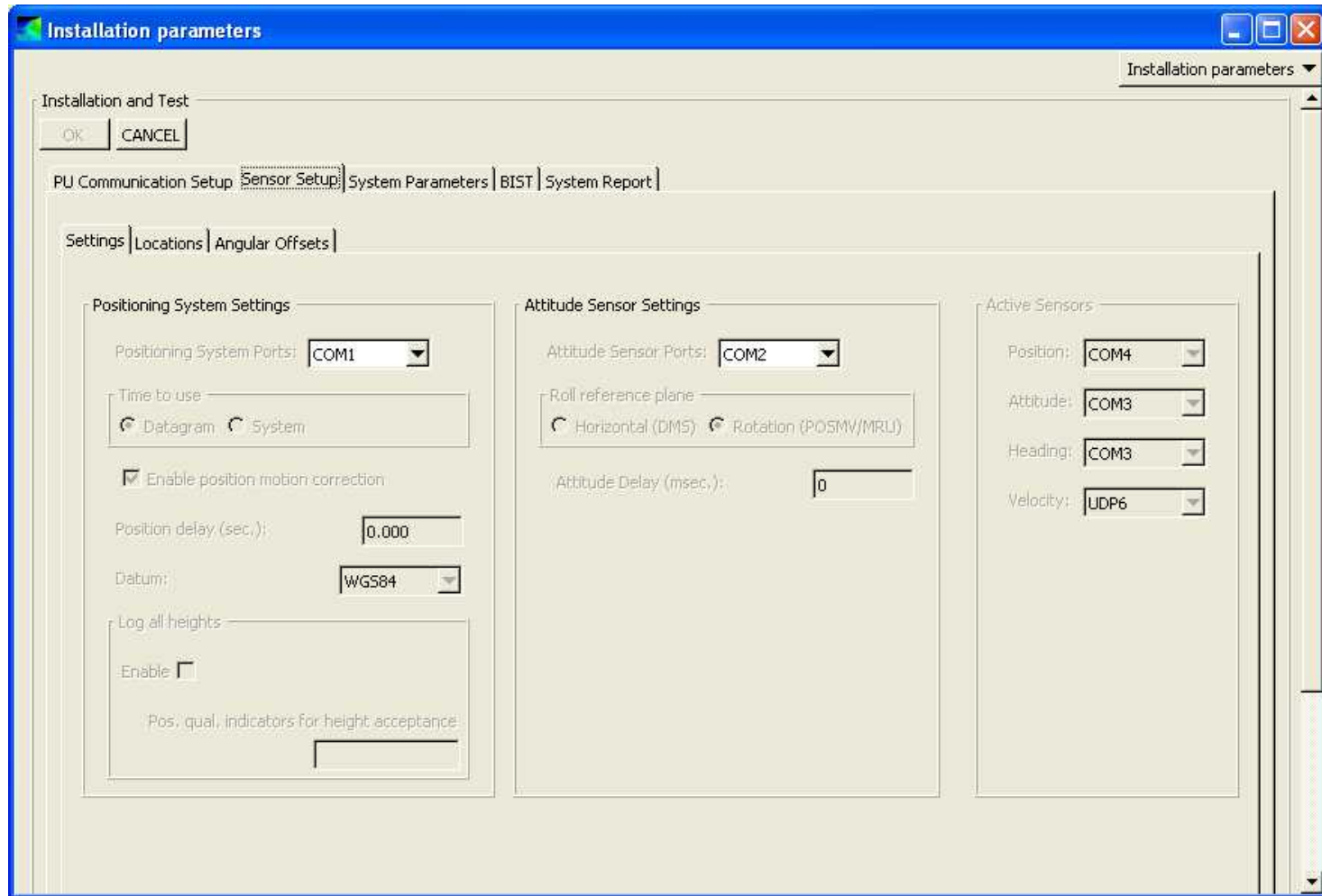
Access via “View” menu, choose “Tear Off” and choose “Installation parameters”

Installation Parameters



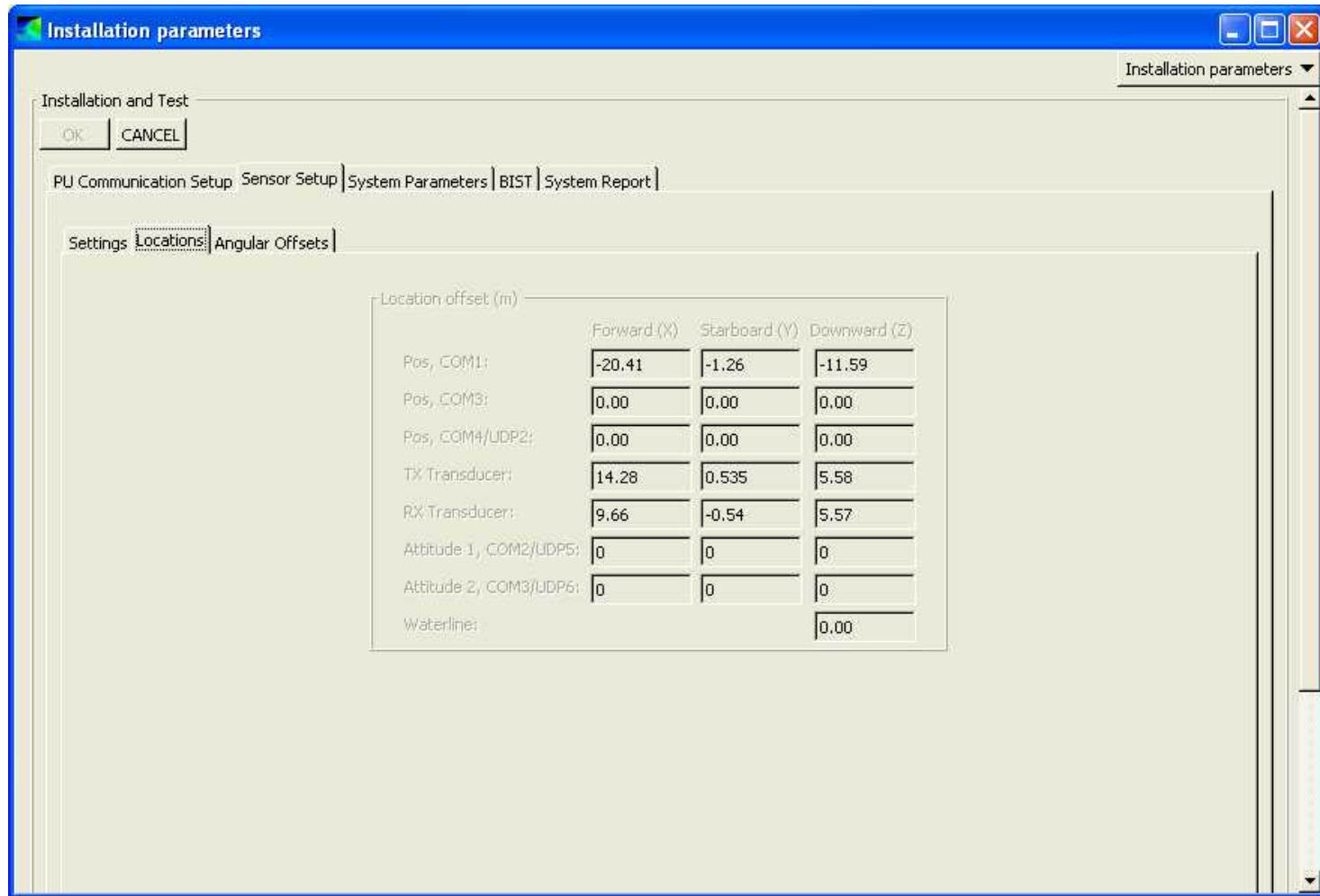
Access via “View” menu, choose “Tear Off” and choose “Installation parameters”

Installation Parameters



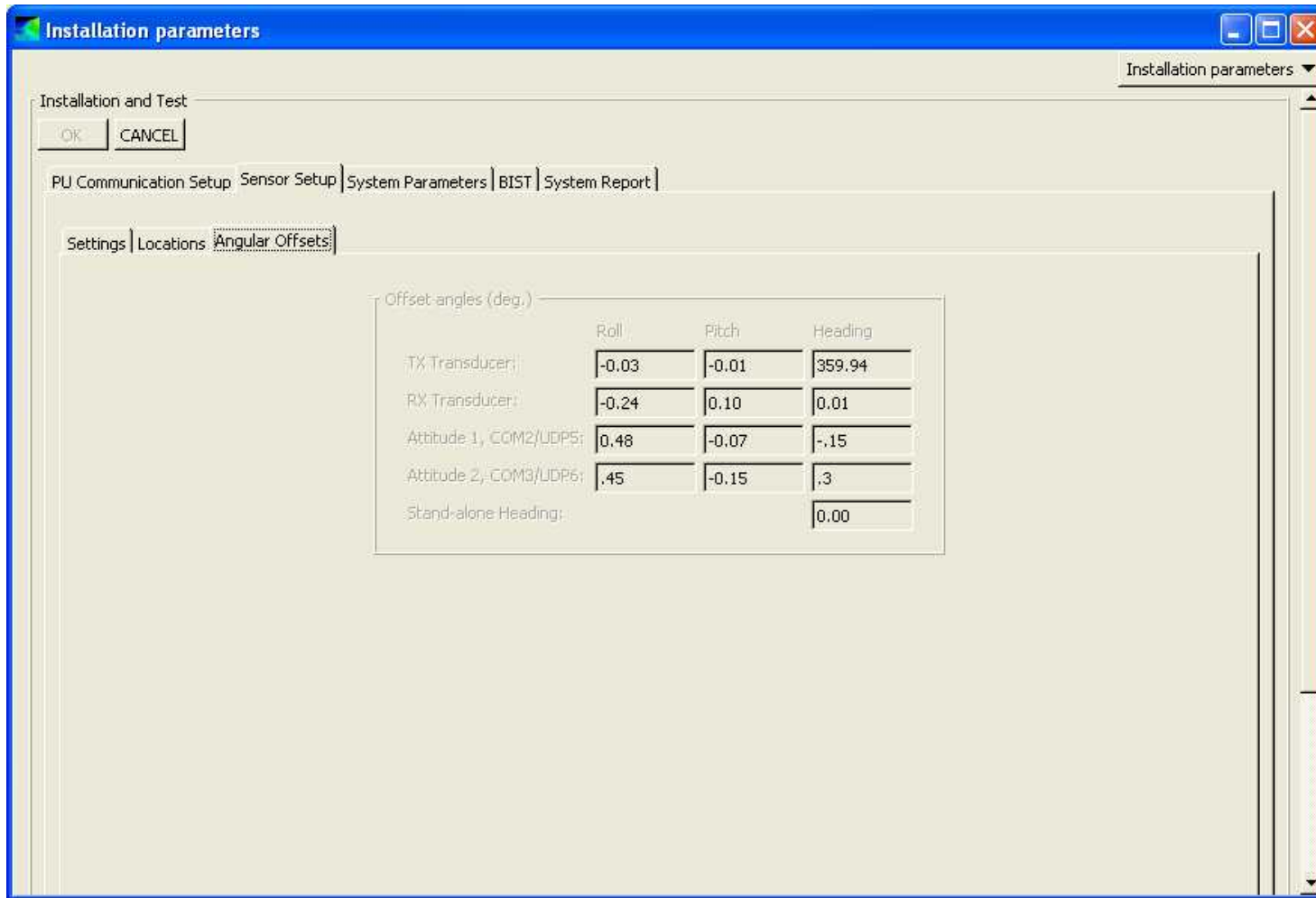
Access via “View” menu, choose “Tear Off” and choose “Installation parameters”

Installation Parameters



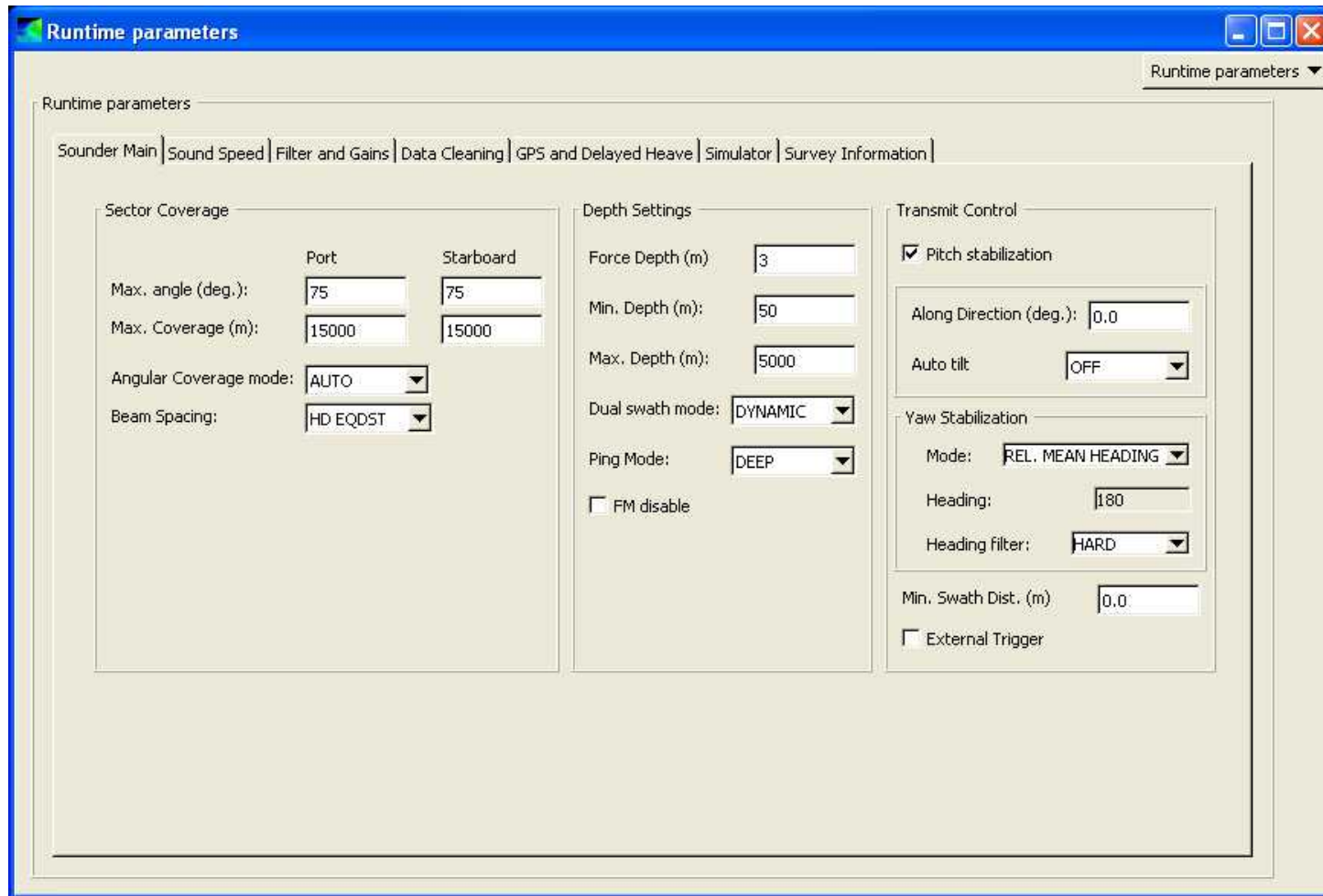
Access via “View” menu, choose “Tear Off” and choose “Installation parameters”

Installation Parameters



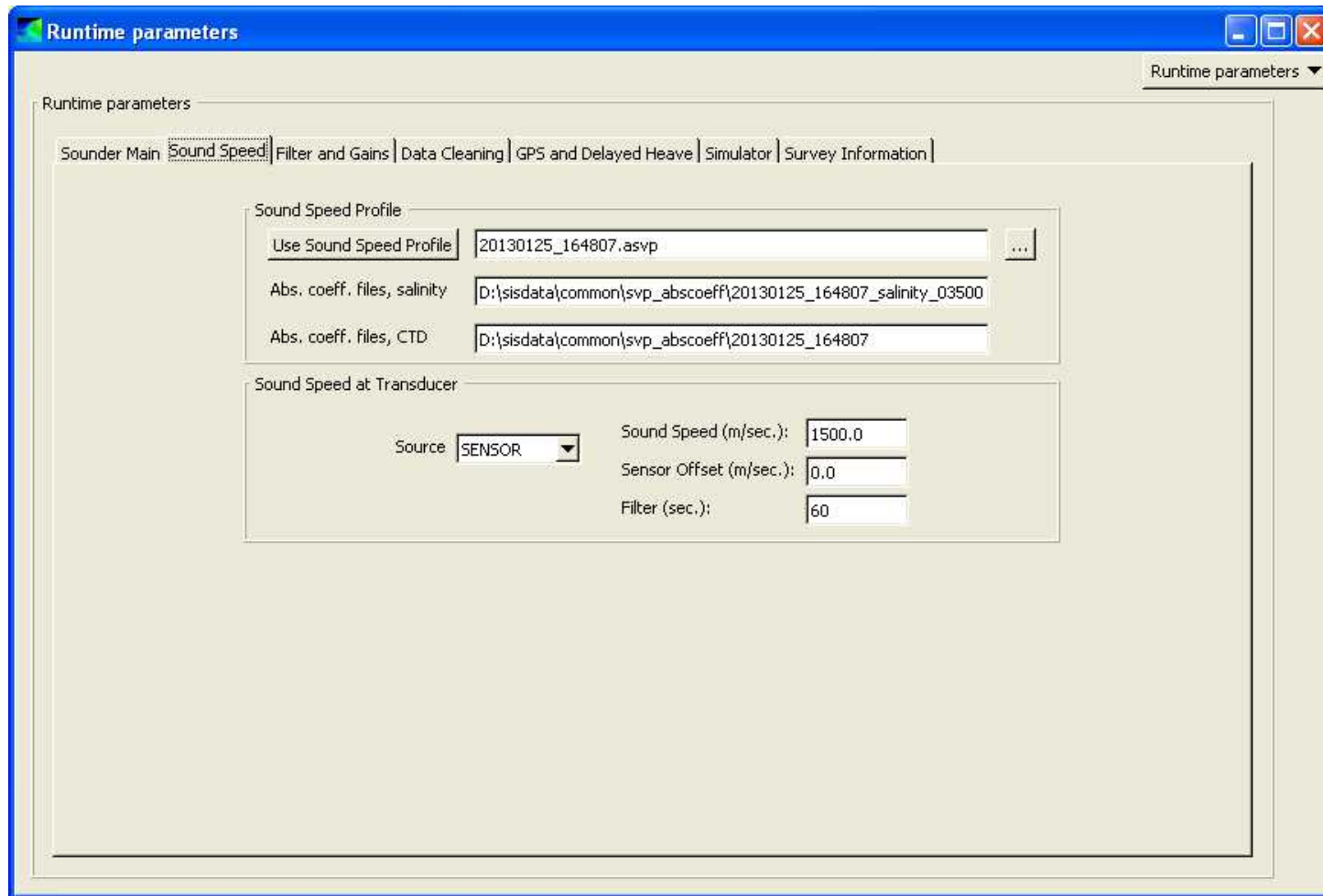
Access via “View” menu, choose “Tear Off” and choose “Installation parameters”

Runtime Parameters



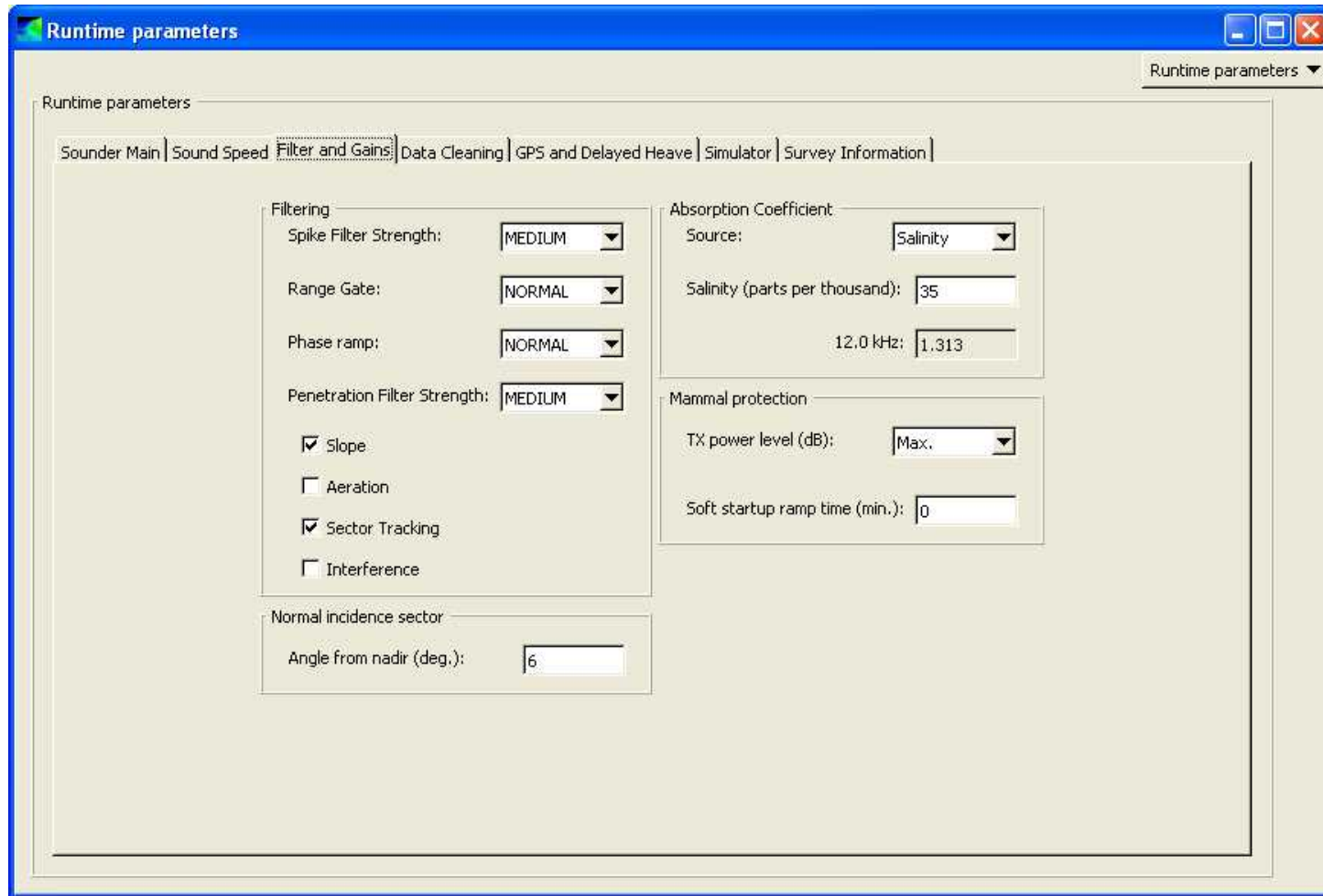
Access via “View” menu, choose “Tear Off” and choose “Runtime parameters”

Runtime Parameters



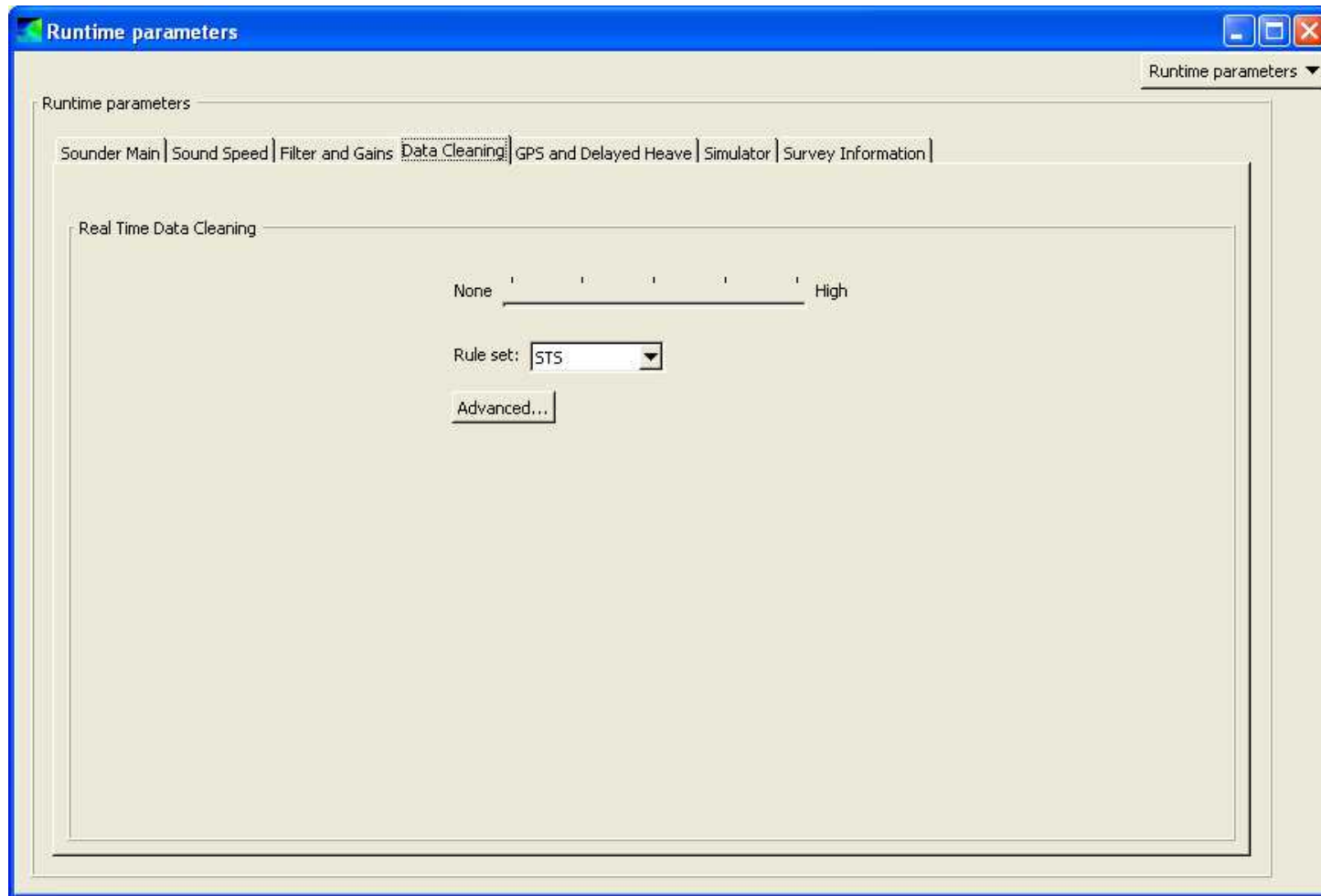
Access via "View" menu, choose "Tear Off" and choose "Runtime parameters"

Runtime Parameters



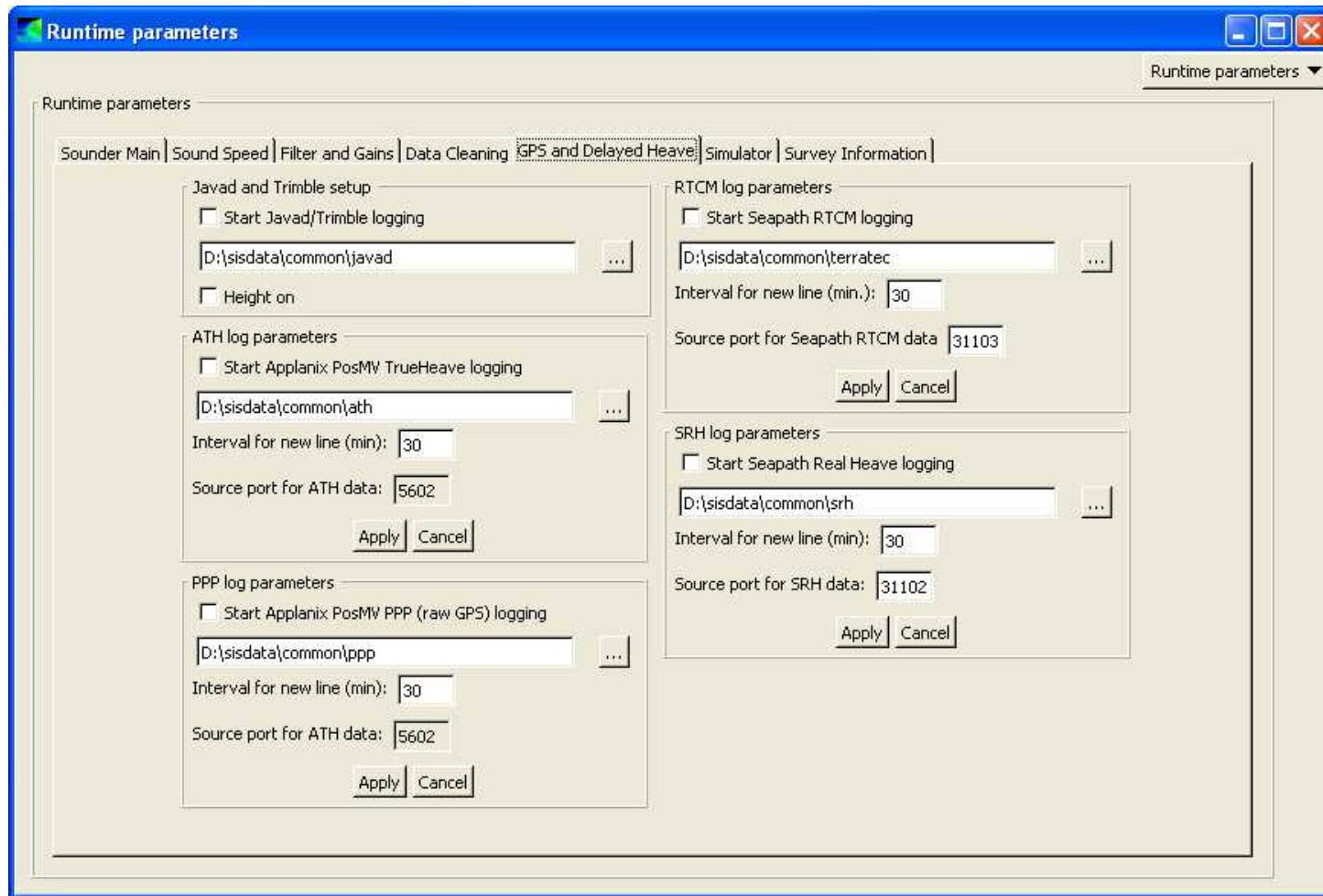
Access via "View" menu, choose "Tear Off" and choose "Runtime parameters"

Runtime Parameters



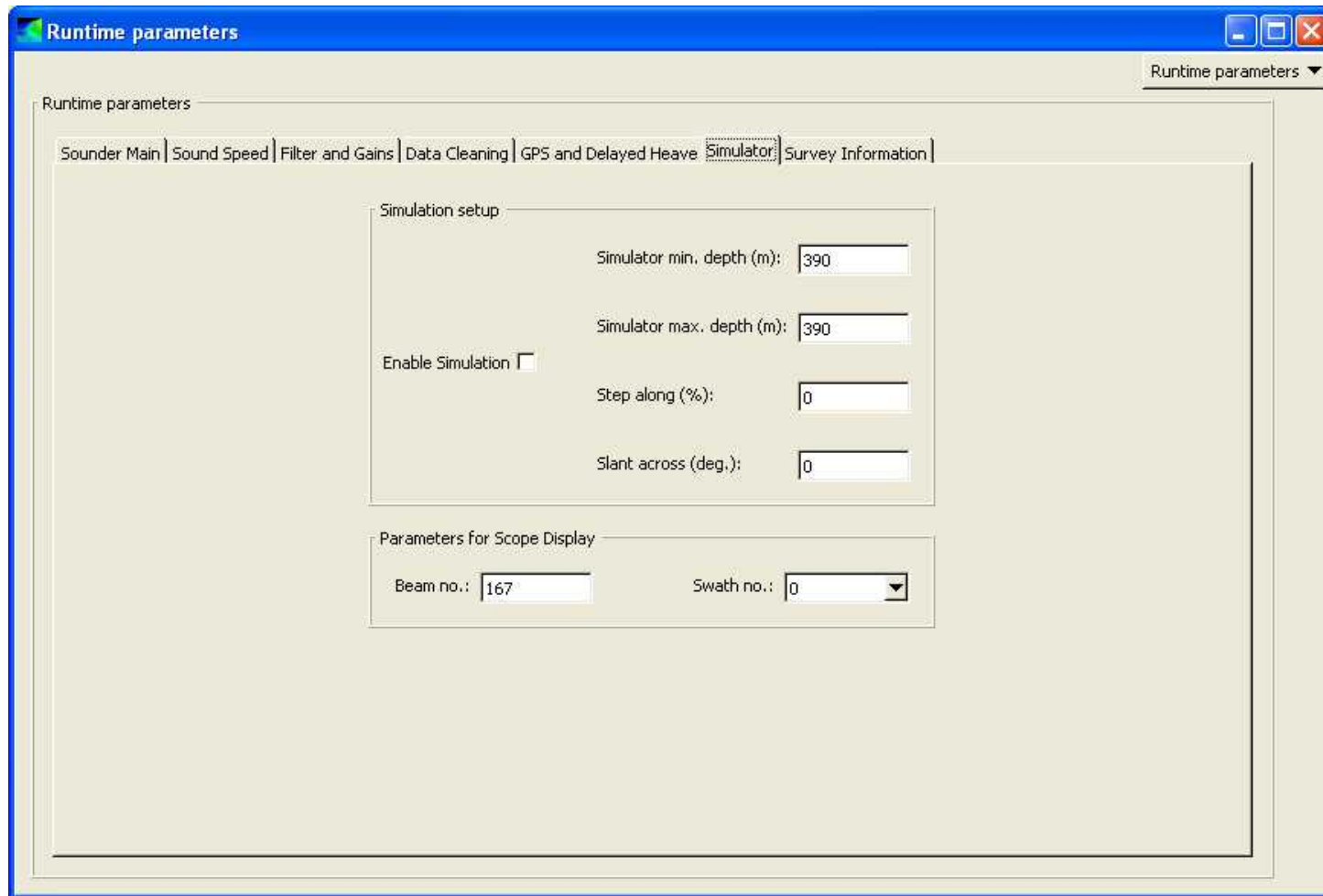
Access via “View” menu, choose “Tear Off” and choose “Runtime parameters”

Runtime Parameters



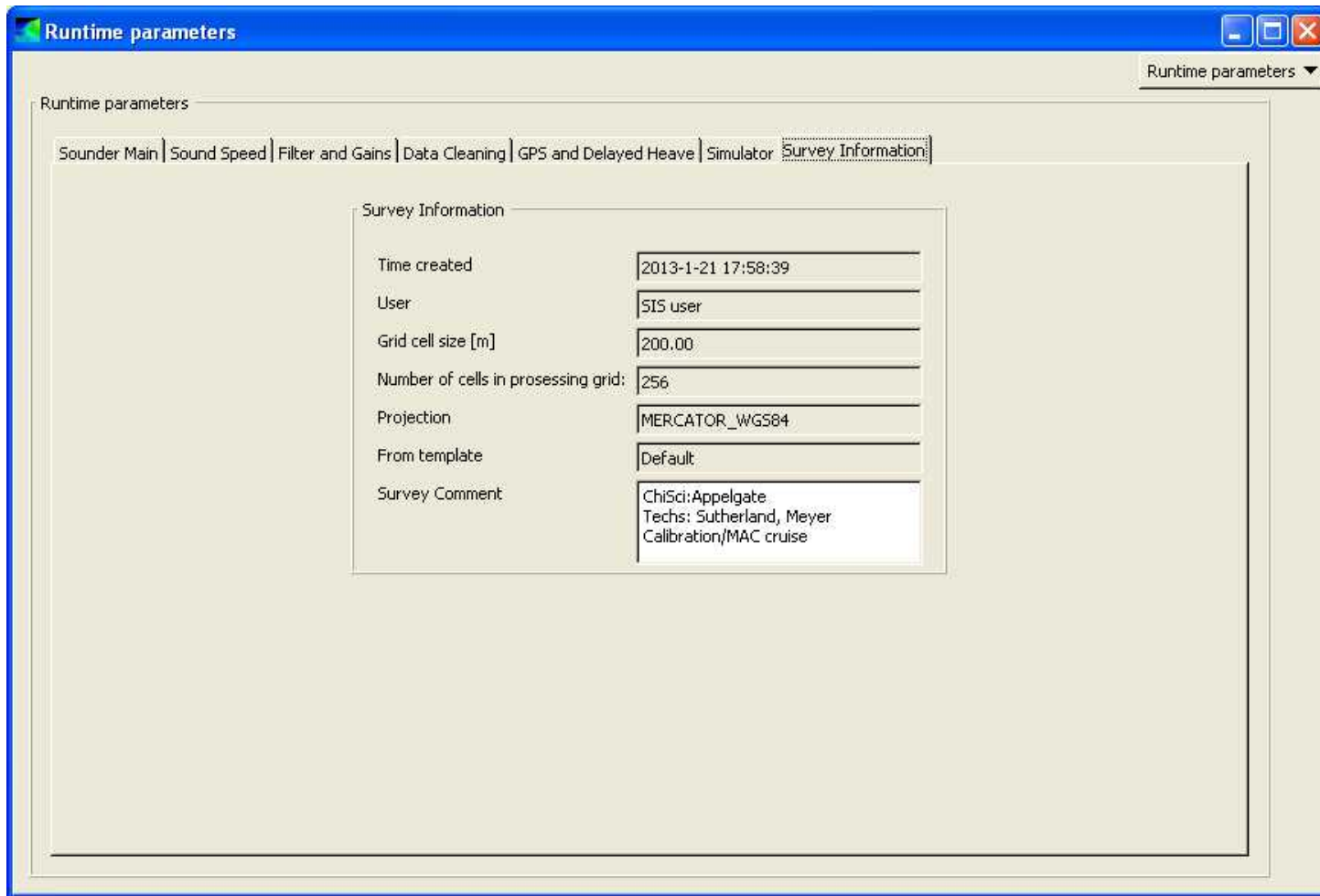
Access via “View” menu, choose “Tear Off” and choose “Runtime parameters”

Runtime Parameters



Access via "View" menu, choose "Tear Off" and choose "Runtime parameters"

Runtime Parameters



Access via “View” menu, choose “Tear Off” and choose “Runtime parameters”

External Sensors

External sensors

Input Setup

Sound Velocity Probe
Probe available Port: COM1
Probe type: AML SV&T (C+T)

Real time Tide
Realtime Tide available Port: []

SVP Logger
SVP Logger avail Port: []

Barometer
Barometer avail Port: []

Geodimeter
Geodimeter avail Port: []
Echosounder: []

Output Setup

Auto Pilot
Auto Pilot avail AP Port: []

Dyn Pos
Dyn Pos avail Dyn Pos Port: []

Depth below keel
Depth below keel avail Port: COM2

Port: COM1
Baud rate: 9600
Data bits: 8
Stop bits: 1
Parity: NONE

Heading

Sensor name	Serial	Port	Ethernet	IP addr.	Port addr.
[]	<input checked="" type="checkbox"/>	[]	<input type="checkbox"/>	[]	[]

Add Compass deviation file: [] ...

Position

Sensor name	Serial	Port	Ethernet	IP addr.	Port addr.
[]	<input checked="" type="checkbox"/>	[]	<input type="checkbox"/>	[]	[]

Position delay (sec.): 0.00

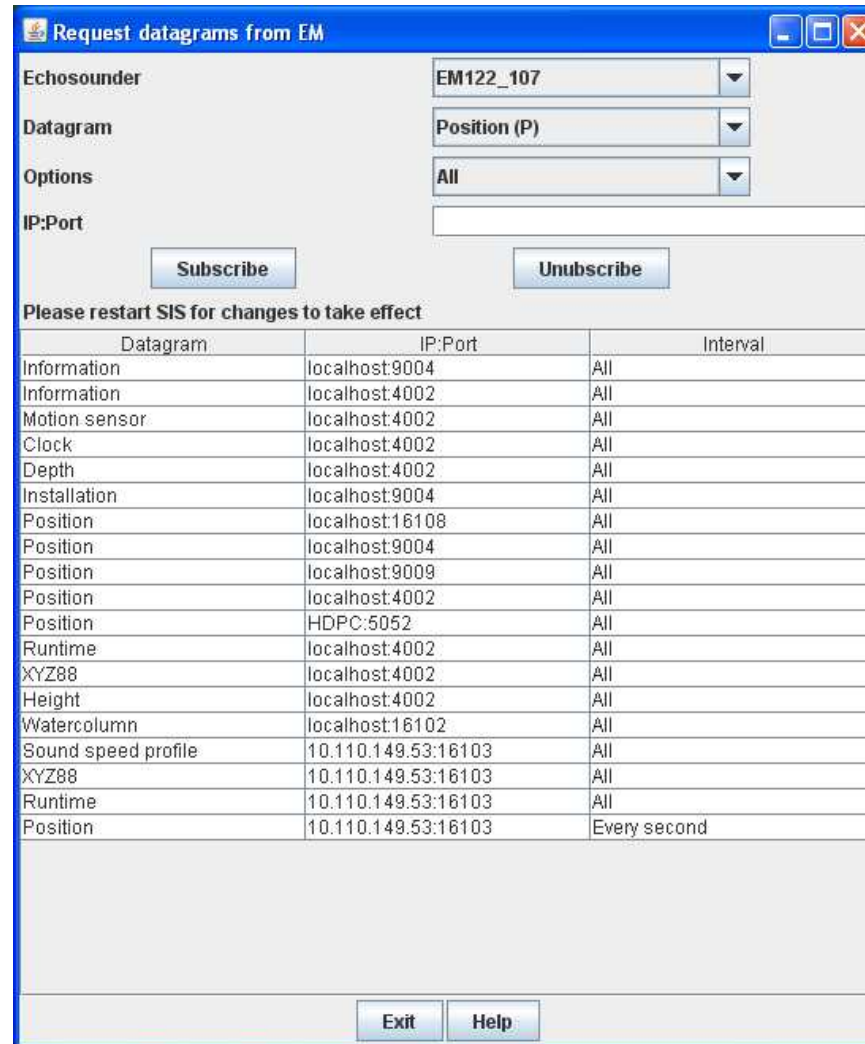
Location offset (m): Forward (X) 0.00, Starboard (Y) 0.00, Downward (Z) 0.00

Waterline for NMEA single beam(m), Downward (Z) 0.00

OK CANCEL

Access via “Tools” menu, choose “External sensors”

Datagram Distribution



Access via “Tools” menu, choose “Custom...” and choose “Datagram distribution”